

## Belleville AARP ready for new social season

Full Report Page 2

## Why we oppose Proposed Bottle Law

Editorial comment Page 4

## Volleyball wizards capture three victories

Mike Lamberti Reports — Page 11

# The Belleville Times

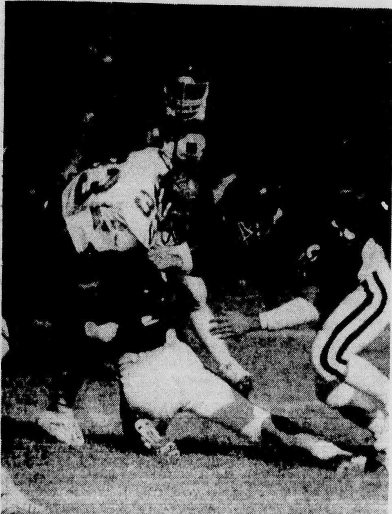
Vol. 75, No.43

Second Class Postage Paid  
At Newark, N.J. (USPS 049-220)

Thursday, September 27, 1984

Published  
Every Thursday

35¢



**Hard Earned Yards** — Buccaneer running back Michael Gibbons works his way for three yards in last weekend's opener with Don Bosco. The senior tallied 89 yards on the day and scored the Buc's second touchdown on 50-yard run, late in the game.

## Teacher contract ratified

**25.5% Pay hike over 3 years**

By Linda Telesco

The Board of Education voted Monday to ratify a new three-year contract with the Belleville Education Association which grants salary increases of 7 percent this school year, 9 percent next year, and 9.5 percent for the 1986-87 school year.

The measure passed the board with six members approving. The seventh trustee, John DiStasi, abstained from voting because, he said, he had no part in the negotiations of the agreement.

According to the new salary guide, a step one teacher who holds a bachelor's degree will earn this year \$15,550, up from last year's \$14,250.

That salary increases to \$16,800 next year and \$18,250 the year after.

A teacher at the highest level on the bachelor's degree scale, step 17, earned \$26,100 last year and will make \$27,275 this year, \$29,200 next year, and \$29,850 in the 1986-87 school year.

For step one teachers who hold a master's degree, last year's salary of \$15,800 rises to \$16,925 this year, \$18,350 next year, and \$19,900 in the last contract year.

A step 18 teacher with a master's earned \$28,600 last year and will make \$30,000 this year, \$32,050 next year, and \$33,575 in 1986-87.

New salary adjustments were also made for teachers who have earned 32 credits beyond the master's degree.

Those teachers at step one earned \$17,000 last year and will make \$21,450 by the end of the contract term.

Step 19 teachers in the same category earned \$30,900 last year and will see that increase to \$36,700 in three years.

Rates for psychologists in the salary guide indicates a step one pay of \$19,125 for 1984-85, up from last year's \$18,500. The 1986-87 pay for step one psychologists is \$23,900.

Step 13 psychologists who earned \$29,600 last year will make \$31,125 this year and reach \$35,900 by the final contract year.

Monday's ratification followed some six months of negotiation. The contract then went to mediator Joel Weisblatt of the South Jersey area, according to BEA chief negotiator Jerry Kennedy.

When asked if the union was satisfied with the contract, Kennedy replied, "The association agreed to the contract, but by no means was it unanimous."

## Happy Apple School Fashion Show Oct. 8

Happy Apple School, a nursery school in Belleville, will hold a Fashion Show/Dinner at the Fiesta on Monday, Oct. 8 at 6:30 p.m. Children attending the school will model the fashions being presented by Sherman's of Belleville/Nutley. Information about tickets may be obtained by calling 751-0633.

## Scores on Basic Skills pleasing to officials



**Belleville Money** — Essex County Executive Peter Shapiro (left) presents Belleville with a \$400,000 community development block grant. The check is accepted by Belleville Township Treasurer Isador Padula, and Township Clerk Mary Lou Hood. The grant will be used for street and sewer improvements in the Silver Lake neighborhood, rehabilitation of the Friendly House Community House Center in Silver Lake and the William Street Playground. Funds will also be provided as revolving loans for improvements to stores in the central business district.

## \$400,000 Grant Goes to Belleville

County Executive Peter Shapiro announced \$6.1 million worth of neighborhood improvement and public work projects to be funded through Essex County's 1984 Community Development Block Grant Program.

Included for Belleville are \$260,000 for street and sewer improvements in the Silver Lake neighborhood; \$65,000 for rehabilitation of the Friendly House Community Center in Silver Lake; \$25,000 for revolving loans for improvements of stores in the central business district and \$50,000 rehabilitation of the William Street playground. The Belleville total is \$400,000.

Shapiro said Essex County has received an entitlement grant of \$5,982,459 from the U.S. Department of Housing & Urban Development plus permission to use \$170,954 in reprogrammed funds, bringing this year's total

Community Development outlay to \$6.1 million.

This year's Community Development program will fund projects in 14 Essex County municipalities in addition to six countywide projects, said Shapiro, who was joined by members of the Board of Freeholders and local elected officials in detailing the projects to be funded through the Community Development Block Grant.

Shapiro said all the approved Community Development projects meet the federal government's criteria that they enhance the development of viable urban communities by helping to provide decent housing, a suitable living environment and expanded economic opportunities, principally for persons of low and moderate income.

## Nardiello lists results with Board

By Linda Telesco

The 1984 Minimum Basic Skills test scores are in and Belleville ninth graders have shown a steady improvement in the past five years, according to Schools Superintendent Michael Nardiello.

Nardiello and high school faculty members delivered presentations at Monday's School Board meeting evaluating both the recent MBS scores, the results of a new state exam — the High School Proficiency Test — and the high school's goals for future improvement.

The MBS, a test administered annually to all New Jersey ninth graders, determines a student's grasp of the basic math and verbal skills needed to ensure graduation.

The results of the test, as reported, indicate how well Belleville students performed in comparison with other students statewide, with students from similar communities, and with other students in a specific district.

According to Nardiello, Belleville students surpassed the state levels and compared favorably with other schools in the district group which comprises schools similar to Belleville High School in terms of economical level of the community, mobility and proximity to urban areas.

"We're measured against other schools typical of us," said Nardiello. "Belleville is not measured against Newark or Millburn," he added, a reference to areas with students who perform significantly lower or higher than statewide averages.

Communities compared with Belleville include Cliffside Park, Clifton, Kearny, and Bayonne among others.

The results of the MBS test given last March show Belleville ninth graders with a reading score of 92.8, compared with state average of 91.2 and district group number at 93.1.

Math scores for Belleville students were 93.3, the same as the state average, while district group average is 93.7.

Commenting on the scores in his address to the School Board, Dr. Richard Benninger, the director, (Please see "MBS Scores" on page 5)

## BHS Guidance Office Open

Belleville High School will continue its program of having the guidance office open over the dinner hour one day each week. The counselors will be present after school on the designated days. The last appointment may be made at 7 p.m. The office will be manned in the near future by the counselors listed below. Dr. Benninger, the director, will be present during each evening program until 5 p.m.

The guidance office will be open the following days: Oct. 3, Open House — all counselors available; Oct. 10, Mr. Espósito and Mr. Kennedy.

## Amato, Zampino to Honor R. DiRuggiero at Brunch

Friends of Ralph J. DiRuggiero will honor him with a

brunch at The Chandelier restaurant at 10 a.m. Sunday, Sept. 30.

Essex County Surrogate Nicholas R. Amato of Belleville and former Belleville School Board member Thomas Zampino will serve as co-chairmen of the event honoring the newly elected commissioner.

Amato and Zampino said the \$200-plate brunch is intended to erase DiRuggiero's campaign deficit from the recent election. "We urge Ralph's friends and supporters to join us in honoring him at what promises to be a warm and enjoyable social event," said Amato and Zampino.

Tickets may be obtained by contacting either Nicholas R. Amato at 748-4204 or Thomas P. Zampino at 284-1099.



Ralph DiRuggiero

## Highly-Rated Bucs Face B. Catholic Here Friday Night

By Mike Lamberti

Following the Belleville Buccaneers' final scrimmage of the 1984 season, head coach John Senesky expressed happiness with his team's offense but was somewhat concerned with the Bucs' defensive effort and the lack of quality tackling. The Bucs' opener last weekend, against Don Bosco, looked to be an offensive struggle between a pass-happy ball club and a run-oriented team which featured a solid offensive line.

So much for pre-game analysis. The Bucs, ranked number three in New Jersey by The Star-Ledger, used a bruising defense and an opportunistic offense to stop Don Bosco, 14-0 last weekend at beautiful Don Bosco

Prep in Ramsey. The game, played on a very warm day, was a fine start for the Buccaneers, who will battle another tough opponent, Bergen Catholic, this weekend starting at 7:30 p.m. Kickoff is Saturday at Municipal Stadium, and Senesky is quite wary of the big Bergen Catholic team.

As for the Don Bosco game, the head coach was very happy. "Our backfield is coming along," Senesky said. "The defense did a solid job. Our tackling was poor in the final scrimmage (versus Livingston) and we worked on improving that aspect of our game. There were some good drives on the offense and I was

(Please See "Bucs" on Page 4)

## For Belleville Parade

## Bella Signorina is Debbie C. Golub

According to Parade Campaign Coordinator, Commissioner Joseph A. Grande, the Belleville "Bella Signorina" for the Columbus Day Parade has been chosen and she is Debbie Candura Golub.

Since the Columbus Day Parade is a joint event sponsored by the neighboring towns of Belleville and Nutley, each will have a "Bella Signorina" representative. The parade will be held on October 7 and will commence at noon from the Belleville Municipal Stadium where committee members, Sam Pappa and Sam Petracca will be supervising the parade order. The parade will then move South on Passaic Avenue to Joramelon Street, then West on Joramelon Street to Franklin Avenue, then North on Franklin Avenue past the reviewing stand in Nutley to its terminating point. The parade route

will be altered next year according to Coordinator Grande and will originate in Nutley, with Washington Avenue its only route and terminating in front of the Belleville Town Hall reviewing stand.

Anyone interested in participating in the parade or its preparation, or as a sponsor, should contact either Jay Tarantino, Ernie Zoppi or Gabe Nazziola by calling 750-7123.

There are already twelve marching band contingents invited to participate including the Belleville High School Band, the Nutley High School Band and the Lyndhurst High School Band as well as the Belleville Soundations. There will be marching units from all over Essex County from fraternal, service and veterans organizations and youth groups such as cub scouts and boy scouts, girl scouts and brownie troops.

# Belleville Business Bureau

**By Howard Halpern**  
The Belleville Chamber of Commerce has unanimously approved and appointed two new members to the chamber's Board of Directors. James Cozzarelli of Irvine-Cozzarelli Memorial Home, 276 Washington Ave., and David Worrall of Worrall Publications, publisher of the Belleville Post and other suburban newspapers. Both gentlemen expressed their desire and willingness to help make it "Better in Belleville."

At a recent chamber luncheon held at Tarantino's Ristorante, the guest speaker was the distinguished Herbert E. Spiegel, Ph.D., MBA. Dr. Spiegel is chairman of the New Jersey State Commission on Cancer Research. The purpose of this newly formed state agency is to fund and foster

both basic research and involvement in clinical research. The doctor is president of several national and international scientific societies, holds national certification in clinic chemistry and toxicology, and is cited in Who's Who in the East. He spoke of cancer causing foods and natural body immunities to the disease and how in some cases vitamins can build up that immunity. Excessive alcohol in combination with smoking is a definite cause of cancer of the esophagus.

The big day approaches — the biggest and grandest Columbus Day Parade in Belleville history is coming Sunday, Oct. 7, at noon. The parade is co-sponsored by Commissioner Joseph Grande, the Belleville Chamber of Commerce, and the Belleville-Nutley Italian American Civic Association.

There will be antique car clubs, motorcycle clubs, veterans' organizations, all of the community service organizations, and the scouts, etc. Those are just for starters. Fourteen bands will be drumming up the festivities. The Friendly Sons of the Shillelagh, Black Watch Drum & Bugle Corp., Belleville's own Soundations Drum & Bugle Corp., the Denville String Band, the VFW Band, the Shriner Band, the New York Lancers, the New York Sunrises, the CMCC Warriors, and the Black Hawks Drum & Bugle Corps. The parade will start at Municipal Stadium, head south to Joralemon Street and make a right turn on Franklin Avenue, winding up at Nutley Savings. Grand Marshall will be Angelo Bianci. So line up early.

President got a 400 plus electoral vote, a balanced budget amendment, a line item veto authority and a Republican-controlled House. It wouldn't make any difference. The present administration's goals, outlined in February 1981 was supposed to have brought a balanced budget to occur during the current fiscal year.

Who's to blame? Was it the Congress in 1981 that cut taxes by too much and spending was not enough? Was it a federal reserve that was too tight in 1981 and early 1982? Or was it a White House that put the whole thing in motion and doesn't want to mention it until after election? Solution? The inescapable truth looks like a taxing solution. If you want to keep much of the butter and agree with the guns, then don't holler when your taxes go up, regardless who's elected.

No matter who's elected, the federal government will probably be bigger than ever. Even if the

## AARP's Next Meeting Thursday, October 4

The Belleville Chapter 2051 American Association of Retired Persons will meet Thursday, Oct. 4, 1 p.m. at the Fewsmith Presbyterian Church, 444 Union Ave.

The speaker will be Dr. Arena.

His subject will be podiatry. Hostesses for the October meeting will be Dorothy Walker and Peggy Bergman.

There also will be an official board meeting Thursday, Oct. 11.

## Rev. Nancy S. Moore New Pastor of Bethany

The Rev. Nancy S. Moore was installed pastor of Bethany Lutheran Church Sept. 9 at a festive communion service. She is the first woman pastor in the church's 53 year history and began her pastorate at Bethany June 1 after being ordained in May at the LCA convention in Ocean City.

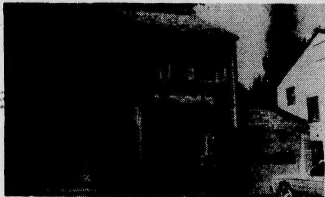
An alumna of Beaver College, Pennsylvania and Drew Theological Seminary, Madison, she is a music major, organist and choir director. She and her husband, William C. Moore, have five daughters and one son at home.

Since coming to Bethany, Rev. Moore has organized a Bible school, youth choir and a group for young adults. "Reaching out to youth and helping them to find a positive image is important to me," she said.

A group of 25 traveled from Rev. Moore's home church in Pennsylvania to attend the service which was followed by a reception in Beisler Hall. Installing minister was the Rev. Herluf M. Jensen, bishop of the New Jersey Synod of the Lutheran Church in America. Others participating included the Rev. Scott C. Schantgenbach, the Rev. Mark W. Oldenberg, the Rev. Franklin Fry, the Rev. Cheryl Johnson, the

Rev. Ilcana Lindstrom, Robert Durocher and Paul Simmons. Members of the Moore family also took part in the service as did members of the church and a choir of 25 sang special music.

## Another DeCarlo Listing!



Nutley's Finest

This outstanding Colonial features large rooms and a gorgeous 1st floor family room with two ceiling fans and glass sliding doors to a patio. Also living room, dining room, mod eat in kitchen, 3 bedrooms, 1½ baths and attached garage. Asking \$132,900. Great Location! Listed by David J. DeCarlo.

**Ann DeCarlo**

AGENCY/REALTOR  
880 BROAD ST., BROOKDALE, BLOOMFIELD  
748-5288 David DeCarlo



## CRUISE THE "FUN SHIPS"

"Let Yourself Go To The Floating City On The Sea!"

Patrician Travel is dedicated to serving your travel needs in the Nutley and surrounding areas.

Our cruise staff which is headed by Dorothy Meo, the professional and experienced travel agent, is ready to make your dreams come true. Come and visit us and experience the "thrill of a lifetime."

We have a special cruise department awaiting your beck and call! Bon Voyage to all!

(Free round trip air from Newark in conjunction with all 7 days or more cruises)



**Carnival Cruise Lines**

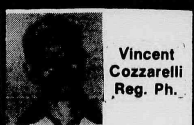
3915 Biscayne Blvd., Miami, Florida 33137 (305) 576-9260

Ships' Registry: Panama and Liberia

## PATRICIAN TRAVEL INC.

249 Franklin Ave.  
Nutley, N.J. 07110  
201-284-0900

## Pharmacy Footnotes



Vincent Cozzarelli Reg. Ph.

### DIURETIC OVERUSE

Although diuretics are often prescribed for water retention they are not the answer to preventing recurring bouts. While occasionally taking a diuretic for mild edema can do no harm, making a habit of using them can worsen the problem and can also be dangerous. A diuretic interferes with the normal functioning of the kidneys. Once the medication is discontinued, the kidneys begin to overreact by conserving more salt and water than ever. The result is an unpleasant "rebound edema" that can last for several weeks. Frequent diuretic use can also result in the depletion of potassium which, in turn, can lead to weakness, dizziness, nausea and constipation.

Questions on medications will be answered gladly by our pharmacist at ROSSMORE PHARMACY, 338 Washington Ave., 750-1956, 750-1968. We provide free delivery of prescriptions and are Medicare and Blue Cross approved. Cosmetics, toiletries, cameras and film are stocked. Hours: 9am-10pm daily, 9am-9pm Sundays.

### HANDY HINT:

Do not use diuretics for "weight loss."



Thur. Fri. Sat. Sun. Mon. Specials  
September 27 thru October 1  
Join Us Here at "Columbus Corner"  
on October 7th, For The Best  
Columbus Day Parade Viewing!

1 lb. HOT JEWISH  
PASTRAMI ..... \$3.24  
(Min. 1 lb.)  
(1 lb. Loaf Fresh Jewish Rye 98¢  
(w/Pastrami Special only)  
1 lb. LEAN DOMESTIC  
BOILED HAM ..... \$2.09  
(Min. 1 lb.)

½ lb. HORMEL  
HARD SALAMI ..... \$1.79  
½ lb. THUMANN'S  
GERMAN BOLOGNA .. \$1.28

Have Lunch With Us...  
Free Coffee With Lunch 11:30a.m.-2:30p.m.  
Open 7 days a week till 10:00 P.M.

**Towne** 751-3935  
**DELICATESSEN  
& CATERERS**  
650 JORALEMON ST.  
Cor. Franklin Ave., Belleville  
Member of Belleville Chamber of Commerce

# 30-YEAR FIXED TERM RESIDENTIAL MORTGAGES AVAILABLE MODERATE INTEREST RATES

First DeWitt Savings offers these moderate rate mortgages on one-family to four-family owner occupied homes.

Also, available at moderate rates are 30-year adjustable rate mortgages.

For details contact our Mortgage Department at 751-2800.



**First DeWitt Savings** AND LOAN ASSOCIATION



BELLEVILLE • BLOOMFIELD • CEDAR GROVE • HOPATCONG  
MAIN OFFICE: 463 Washington Ave. Belleville • BLOOMFIELD CENTER OFFICE: 667 Bloomfield Ave. Bloomfield  
BROOKDALE OFFICE: Broad St. & Watchung Ave. Bloomfield • CEDAR GROVE BRANCH: 532 Princeton Ave. Cedar Grove  
FOREST HILL OFFICE: 60 Belleville Ave. Bloomfield • HOPATCONG OFFICE: Sharp Ave. & Hopatchung Rd.  
WATSESSING OFFICE: 20 Watseessing Ave. Bloomfield

**751-2800**

IN HOPATCONG CALL 398-0900

## Early Bird Special!!! SNOW TIRES & ALL SEASON

### Jetzon Belted Snow

165/80B13 - \$32.35	215/75B14 - \$40.85
185/80B13 - \$33.65	215/75B15 - \$41.85
195/75B14 - \$36.80	225/75B15 - \$44.65
205/75B14 - \$38.95	235/75B15 - \$46.95

### Jetzon All Season

P155/80R13 - \$38.85	P185/75R14 - \$45.95
P185/80R13 - \$42.95	P195/75R14 - \$46.85
P205/65R14 - \$49.95	

- Mounting & Valve Stems Included
- Road Hazard Guaranteed Up To 50% Of Tread Wear

## Joe's Alignment Service, Inc.

597 Washington Ave.  
Belleville 751-7433



### Your Movie Rental Store For '84

NO CLUBS, NO MEMBERSHIP FEE  
**NOW SHOWING!**

- FOOTLOOSE
- ROMANCING THE STONE
- SPLASH
- RECKLESS
- ICE PIRATES
- HARD TO HOLD
- BLAME IT ON RIO
- THE BIG CHILL
- HOT DOG

WEEKEND PASS

WHERE THE BOYS ARE '84

OUR 2nd YEAR

ANNIVERSARY SPECIAL

4 Tapes Any 2 Days \$8

Other Good Sept. 27-Oct. 17 (Mon-Thurs)

Rent any Tape

Tues.-Thurs. \$1.89

All Ratings G-XXX

We Rent and Repair VCRs

Over 1500 Movies

Videotaping For All Occasions

Coming Soon: Firestarter, Bolero, Bounty, Empire Strikes Back, 16 Candles, Against All Odds

**Instant Video**

186 Main Avenue

Passaic Park • 778-4751

Open Daily 11:30 a.m. - 9 p.m.

## Gold Medalists in Trenton



**Olympic Salute** — Senate President Carmen A. Orechio (second from left) joins Attorney General Irwin Kimmelman and Assembly Speaker Alan Karcher in honoring New Jersey Olympic Gold Medalists Ann Donovan (Women's Basketball) of Ridgewood, Bruce Baumgartner (Wrestling) of Haledon, and 1948 Gold Medalist Horace Ashenfelter (3000-Meter Steeplechase) of Glen Ridge at ceremonies in Trenton.

## '2' GOOD BE TRUE

Our Famous  
**FOUR SEASONS DINNER**

- Lobster Tail • Steak
- Chicken • Shrimp

Also Includes  
• Salad Bar • Pasta • Ice Cream • Coffee  
Fri. 5-8 p.m. Sat. 5-7 p.m.  
Sun. 1-6 p.m. While Supply Lasts

2 For The Price of 1 **\$17.95**

Entertainment This Weekend

Saturday

**JACK CHIELLO**

Sun. THE GONDOLIERS

**DON'S "21"**

RESTAURANT

McCartey Highway & Bridge St., Newark

Ample Free Parking

### Exhibit at Library Features Rita Safer

This month's art exhibit of oil paintings at the Belleville Public Library are the works of artist Rita Safer of Belleville.

J.M. Turner (1775-1851) inspired Safer with his use of diffused light and the misty quality of his landscapes. Safer has been achieving the same type of look by using palette knives, instead of brushes.

The exhibit can be viewed during library hours.

**PARK MAN**  
NURSING HOME

Belleville to Belleville Public Library  
Specializing in Nursing Home  
PROFESSIONAL NURSING STAFF  
REHABILITATION PROGRAM  
PHYSICAL THERAPY  
OXYGEN TREATMENT  
SPECIALISTS

- AGED
- CONVALESCENT
- CHRONICALLY ILL
- POST-OPERATIVE

28 Park Place, Mountfield  
**743-7772**  
Wings of an American Nursing Home Award  
Nursing Home of the Year (1983)

Think Chicken • Chicken Holiday • Think Chicken • Chicken Holiday • Think Chicken • Think

## NOW OPEN!!

Eat-In  
Take-Out

**Chicken  
Holiday**

Bar-B-Q Ribs  
&  
Seafood

FRESH PERDUE CHICKENS SERVED DAILY  
FOR SPEEDY PICK-UP SERVICE

CALL 759-4435

Catering For All Occasions  
"Let Us Cater Your Next Affair"

368 Main St.  
(Grand Union Shopping Center)  
Belleville, N.J. 759-4435

Hours: 11 a.m.-10 p.m.  
7 Days A Week

Chicken • Think Chicken • Chicken Holiday • Think Chicken • Chicken Holiday • Think Chicken • Think

## LEVI'S ACTION JEANS



**Levi's for men**  
WITH A SKOSH MORE ROOM™

We've combined our famous "skosh more room in the seat and thigh" with some great new features, to create the most comfortable Levi's jeans ever—Levi's Action Jeans. While the "skosh" gives you that slightly fuller cut for a trim comfortable fit, our unique comfort waistband breathes with you and stays neat looking. And our easy-care two-way stretch fabric keeps Levi's Action Jeans looking good and feeling terrific wash after wash.



QUALITY NEVER GOES OUT OF STYLE®

## ATLANTIC UNIFORM

444 Washington Ave.  
Belleville 751-1242



## BACK PAIN NECK PAIN

IT COULD BE PINCHED NERVES

Pinched Nerves May Result In:

- HEADACHES
- LEG PAIN
- DIZZINESS
- NUMBNESS
- SHOULDER PAIN

WHY SUFFER NEEDLESSLY?

A SPINAL EXAMINATION CAN  
REVEAL IF YOU HAVE PINCHED NERVES

### LIMITED TIME OFFER

ORTHOPEDIC NEUROLOGICAL  
SPINAL EXAMINATION

**\$25**

Most Insurances Provide Coverage  
Health (Major Medical 80%) Liability (Auto Accident 100%)  
Approved Workman's Compensation (on the job injury 100%)  
\* Most provide coverage with satisfied deductible

### Bloomfield Chiropractic Center

858 Joramemon St. Belleville  
759-3600

Dr. Gerald Mattia D.C.  
Dr. Susan Guarino D.C.



# The Belleville Times

Serving Belleville Since 1909  
Published Every Thursday  
At 151A Washington Ave.  
Belleville, N.J. 07109

Phone 759-3200

Publisher  
FRANK A. ORECHIO

Annual Subscription  
\$12.00  
Senior Citizens  
\$7.00

## Prayer For Today

O Lord, the Lord whose ways are right, keep us in Thy mercy from lip-service and empty forms; from having a name that we live, but being dead.

Help us to worship Thee by righteous deeds and lives of holiness; that our prayer also may be set forth in Thy sight as the incense, and the lifting up of our hands be as an evening sacrifice.

## Can/Bottle Deposits

A new legislative proposal has been unveiled by a coalition of various groups involving a 43-year-old campaign to enact a mandatory can and bottle deposit law.

The latest pitch is to take dime deposits on all cans, plastic containers and bottles of beer, malted beverages, soda and other non-alcoholic drinks.

Recently, New York's experience with its bottle deposit law was given great publicity. The New York record indicates that its bottle law does very little to eliminate the litter that borders New York's highways, byways, parks and other public areas.

Under the new proposal, consumers would be socked a dime for every purchase they made that involves practically any kind of container. Most people will not "cash in" the empties for the dimes they may recapture.

Glass manufacturers complain that many of their employees will become unemployed should a bottle deposit law be enacted. New Jersey's glass bottle manufacturing facilities are the largest in the nation.

The New Jersey Department of Environmental Protection is drafting a mandatory recycling proposal that should become law by year's end. Already in effect are recycling activities carried on by many communities in the State. A total

statewide recycling effort should be given a chance.

Last year, proponents of a mandatory bottle deposit law were asking for a nickel — this year, it's doubled. Who knows, next year may bring a triple increase. We are opposed to a mandatory can and bottle law because the New York experience leaves much to be desired with such legislation.

There are questions that arise but are difficult to answer. Where would empties be taken? Where would the redemption center be located? Who would pay for the cost of handling? Who would enforce the measure — and who would pay for the enforcement personnel required?

And last but not least, much of the litter we see along our highways and byways of our state involves items other than cans, bottles and plastic containers. No one has yet given us an answer as to how that litter could be prevented.

Clean environment means as much to us as to the proponents of the proposed can and bottle law. We fail to see that the alleged advantages of the proposed legislation outweighs the disadvantages.

*Frank A. Orechio*

## Armando Di Villa

For years, folks in and about our community have been saying that a New York quality restaurant was lacking here in the Belleville/Nutley area.

Saturday night, Armando Di Villa, enjoying raves from the New York Times, Cue Magazine, Bergen Record, New Jersey Monthly — and more — will open its doors at 800 Bloomfield Ave., Nutley, the location of the former Eighth Floor/Nutley Manor.

Armando Di Villa is owned by maitre d' Onofrio Pelligrini, a native of Bari, Italy, and chef Armando Cotumaccio, also from Italy.

They worked together for the first time in the United States at the highly reputable Alfredo's Restaurant in Manhattan's Central Park West. For seven years, the team of Onofrio and Armando made Alfredo's Restaurant one of the three top-rated establishments in New York City. Seven years ago, they decided to strike out on their own and opened a storefront, Armando

Di Villa Restaurant, on Bergenline Ave., West New York. Within a year, patrons needed a shoehorn to work their way into the restaurant.

Onofrio and Armando are a class, professional act — hard to follow and unequalled in the area. The restaurant will be open to the public for dinner Saturday, Sept. 29. Monday through Friday, lunch and dinner will be served. On Saturday's, the restaurant will be opened for dinner only. Sunday, it will be closed, except for banquets, weddings and special parties.

Onofrio and Armando are men of character. They have a proven record of integrity, quality and consistency. It gives us great pride to welcome them to Nutley.

*Frank A. Orechio*

michael lamberti's BUC SHOTS

## Gymnasts, Booters, Harriers Look Good in Early Matches

By Michael Lamberti

Some strong performances were turned in by our gymnastics, soccer and cross country squads last week as the varsity action picked up full steam for the autumn of 1984.

The Belleville gymnasts lost by four-tenths of a point to Hasbrouck Heights, despite the fact that one of their top performers, Jill Lillis, missed the competition due to a sprained ankle. Head coach Ray Iannuzzi, in his debut at Belleville High School, was pleased with the performance and is looking for better things as the season progresses.

The girls battled a very good team from Ridgewood on Tuesday and will be in Hackensack tomorrow afternoon, starting at 4 p.m. Next Thursday, the team will travel to Teaneck, also starting at 4 p.m. "I don't like to make alibis," said Iannuzzi. "But, if we had Jill, we might have pulled the meet out. Our girls did a nice job, nonetheless and the meet went right down to the wire. As a matter of fact, in the final event, the score was tied on a number of occasions."

The final tally was 63.55 for Hasbrouck Heights and 63.10 for the locals. Despite the setback, Belleville took a first place in all four events.

In the vaulting exercises, Linda Wujack was first with a score of 6.8 while Debbie Battista finished third with a 6.4. Over to the balance beam, Wujack once again took top honors with a score of 6.6. Gina Lemongello, herself, hobbled by an injury, came through with a 6.2, good for third place.

In the uneven parallel bars, Alise Davies was first with a score of 5.75. Wujack was once again in the thick of things with a second place showing.

Finally, the floor exercise, traditionally one of Belleville's stronger events, saw Wujack cap off a marvelous day with a first place showing of 7.1.

One of the gutsiest performances of the match came from freshman Laura Nankervis. Competing for the first time, Nankervis put on an impressive show and drew the praise of her coach. "Laura did an excellent job," said Iannuzzi. "It was her first time out and she wasn't even expecting to compete. We just threw her in there and she tried her best and worked hard. You can't ask for anything more than that."

The match featured the tremendous ability of Wujack and a possible new hero one day in Laura Nankervis. It was a good start for the 1984 season, even though the girls finished on the short end this time around.

The Buccaneer cross country

team is just one runner away from being a serious contender in the NN-JIL. Last week, the team lost a tough 27-32 decision to Bloomfield and dropped an equally difficult 24-35 match to Livingston. Sandwiched between those matches was a top-sided setback to powerful Eastside, 15-50. On the season, John Tosato's squad is 0-3 and now faces a new problem, injuries, as the squad looks to break the victory column.

The Bucs battled Montclair on Tuesday and will take part in the Holmdel Invitational this Saturday. Next Tuesday, the Bucs will be in Passaic and next Thursday, will "host" Nutley, at Nutley Park, starting at 4 p.m.

The boys' team has been paced in the early going by sophomore Craig Burden, seniors Bill Huamani and Bob Hutchinson. Another senior, Ross DeMeo, is back on the team, but he will need some time to get back into shape. Junior Jeff Tyther is suffering from shin splints, sophomore Mark Huamani is out with a broken nose and senior Bill Huamani has an ear infection which could hamper him this weekend.

Burden led the way against Livingston, winning the race by one second over his Livingston rival. He finished with a personal best of 18:06 on the home course in that race as well. In the Bloomfield race, Burden was third and against Eastside, he didn't finish the race because of an injury.

Hutchinson, the team's most consistent performer thus far, was second against Bloomfield, fifth against Livingston and was the first Belleville runner across the wire against Eastside, taking eighth place overall. Tosato was very happy with the performance of Hutchinson and sees good things from the upperclassmen as the season progresses.

Huamani was fourth versus Bloomfield, ninth against Eastside and sixth in the Livingston race. His time of 18:49 against Livingston was a personal best for the senior.

In the Bloomfield race, Belleville took second, third and fourth place but lost the race by a close margin. A solid fourth runner is the final piece to the puzzle that Tosato is looking for.

The girls' cross country team is 1-1 after defeating Bloomfield, 26-29 and losing to Eastside, 15-44. Joyce Luongo, a freshman, was second in the Bloomfield race while sophomore Donna Lee Daudein took third.

Anthony De Aquino's soccer team, coming off a 15-6-2 campaign in 1983, has been playing well in the early stages of 1984. The Bucs suffered a tough 2-1 loss at Montclair last weekend and took a 1-3 record



into this week's action. Ozzie Stefanon tallied the only Belleville score of the day in the first half, which was unassisted. Buccaneer goalie Bill Donnerstag did a fine job in goal and De Aquino was quite happy with the performance of his young team.

The Bucs' lone victory thus far this year was against conference rival Paterson Eastside. Belleville will battle a tough schedule this year, facing perennial power Paterson Kennedy, Bloomfield, Nutley, Passaic and Montclair, along with Clifton. De Aquino also noted that the Bucs lack depth off the bench, which could hurt the team in the later stages of close ball games. In either event, Belleville has been more than competitive in the first four games, and any team clobbered by De Aquino will be more than respectable during the course of the season. De Aquino has always been known for a hard work ethic and instills that into his athletes. They always give a strong performance on the field.

Congratulations to the Belleville football team on its fine performance last weekend. Also, thanks to Dino Ibelli for providing the statistics that make the football stories possible.

The Belleville High School athlete of the week is Linda Wujack of the gymnastics team. Linda was unstoppable in the girls' opening match of the '84 season. She won three events and took second place in a fourth. Her all-around excellence helped Belleville in a close match against Hasbrouck Heights and should be a big factor during the season.

Here is the answer to last week's quiz. The question was, name the divisional playoff of the 1981 major league baseball season which was interrupted by the strike. The answer: Philadelphia and Montreal played in the East, which Montreal won in four games. Los Angeles and Houston played in the West, with L.A. winning in five games. In the American League, the Yankees and Milwaukee played for the East's crown, with the Yanks winning in five games. In the West, the Kansas City Royals and Oakland A's played for the crown, with Oakland sweeping in three games.

For this week's quiz, in 1980, the National League Western Division crown came down to a one-game playoff for the championship. Name the two teams which played the one game, the winning pitcher and where the game was played. Also, name the team the conference winner played in the NL championship series.

## Bucs brushing up On quality defense

(Continued from Page 1)

very happy with our conditioning."

The conditioning might have been the most important factor. Don Bosco, 8-2 last year and Parochial A Champion, is a team that uses a separate offense and defense. Belleville has eight players going both ways and with the temperature in the high 80s throughout the contest, the heat could have sapped the Buccaneers' chances in the second half. Instead, the local players displayed that Belleville pride and overcame the elements to post a very impressive victory.

The first half was a defensive struggle. Belleville had one strong drive in the half, which started from its own 40. A pass interference penalty, an 11-yard run by quarterback Mark Walsh, a 17-yarder by running back John Oliveri and some strong runs by Michael Gibbons moved the ball to the Don Bosco one, where it was first and goal. At that time, the Bucs' starting center, Ed Stangel, went out with a minor injury and Walsh fumbled the next two snaps from the new center. On both instances, he recovered the ball, but Don Bosco gained some momentum and halted the drive at the DB 20.

In the second quarter, following a fine punt by Dave Long,

Bosco quarterback Rob Nutlie, who doesn't know how to hand off, passed to John Morrison, who fumbled at the DB eight. Anthony Gizzo was alert and advanced the loose ball the final eight yards for the first score of the season. Ralph Chimento added the conversion and Belleville led, 7-0.

The heat seemed to have an effect on both teams in the second half. Nutlie tried every pass pattern in the books to try and move his club, but Don Bosco never got closer than the Belleville 29. On the day, Nutlie, who is considered to be one of the best passers in the area, was 13 of 28 for 150 yards and two interceptions, one by Walsh and the other by Joe Feith.

The final Belleville score of the day came late in the fourth quarter when Gibbons took a handoff from Walsh and scooted untouched to the end zone for the tally. Chimento added the final point after attempt and Belleville had won its fourth straight opener, sixth in the last eight years.

On the day, Gibbons rushed for 89 yards in 12 carries, 50 of those yards coming on the touchdown run. Oliveri added 36 yards rushing and Gizzo 11. Don Bosco gained just 30 yards rushing on the afternoon, with Keith Esposito leading the way with 36 yards on eight carries.

Sensky cited the fine play of Jim Caponi, Gibbons, Bob Moezika, Walsh, Steve Kimble, Feith, Gerald Kraus, John Apicella and Dominick Di Paolo.

"Our kids played a tough game," praised the coach. "We played with a lot of intensity and did a good job against a very well-disciplined team that did a lot of passing. It was a good start."

The Bucs focus now turns to Bergen Catholic. Last season, BC was 7-3, losing the Parochial A playoffs to Don Bosco. This season, BC started with a 24-0 shattering of Bloomfield and feature a huge offensive and defensive line. "It will be a tough assignment," said Sensky. "They remind me of the old Seton Hall teams and some of the big Montclair teams we've faced in the past. They have a good passing and running team and should be quite a challenge."

NOTES: Bosco was penalized for 102 yards while Belleville was hit with just 15 yards in penalties. No injuries for Belleville, other than leg cramps to Gizzo. Long did a marvelous job in the punting department, averaging 36.1 yards per punt and on many occasions, putting Don Bosco deep in its own territory. Walsh did a good job in the running department and will add a new dimension to the Bucs' backfield with his bootlegs.



# BHS scores fall far below all state averages

(Continued from Page 1)

for of student personnel services in Belleville, noted that the MBS scores for local ninth graders have improved steadily over the past five years.

While Belleville students scored in the 40s and 50s on 1973 and 1974 state assessment tests, they now score in the 90s, administrators noted.

However, the educators who spoke at Monday's meeting reminded the board that the MBS test is only a test of the most basic skills and New Jersey students face a much tougher challenge in the new High School Proficiency Test.

Dr. Benninger explained that the HSPT, which is still being administered on a trial basis to ninth

graders statewide, will make its official debut in 1985 and a passing grade will be required before next year's freshmen will be permitted to graduate in 1989.

Students who fail the HSPT will be required to take remedial work and repeat the test until achieving a passing score.

Though only an experimental test this year, the scores from the HSPT showed Belleville students, once again, on a fairly even scale with the state and district scores.

The HSPT consists of three parts, reading, math, and writing. On the reading test, Belleville students scored 75.6 compared with state figures of 77.3 and district average of 68.3.

Math scores put Belleville at 58.0, state results at 62.6 and the district average at 52.2.

The challenging writing test consists of a multiple choice section with questions on such skills as word recognition and identifying parts of speech as well as an essay section.

On multiple choice, Belleville scores were 76.4, the state was 77.7, and the district was 70.1.

The essay test results for Belleville were 7.8, the state 7.6, and the district 6.5 out of a possible 10 points.

The total of all HSPT scores put Belleville students at 80.8, the state at the same figure and the district at 80.1.

Calling the new test, "pretty tough," Leonard Marciano, the high school English supervisor, outlined the strengths and weaknesses Belleville students displayed on both the MBS and HSPT exams, and made recommendations for improving future performance.

On the MBS, he said students were strong in word recognition and in using study skills such as consulting a book's index or table of contents.

Weakness showed in control of verb tenses, and in identifying the purpose of an author in long written selections.

A primary recommendation Marciano made in his vigorous report was to reduce class sizes

and give English teachers four classes.

Presently, English teachers teach five classes a day averaging about 25 students to the class.

Marciano noted smaller classes would permit teachers to give more writing assignments and spend more time in correcting and evaluating each.

Other recommendations were to encourage teachers in every subject area to focus on reading comprehension and writing skills and to be familiar with the weaknesses common to Belleville students.

"There should be a watchdog to go around and check that every teacher is teaching writing regardless of the subject written about," said Marciano.

When asked by board trustee Phil Linfante who the watchdog would be, Marciano implied the board should consider naming another individual to the post of writing supervisor.

"I already have 33 teachers under my direction," said Marciano, who apparently will not perform those "watchdog" duties.

In a similar report, Mathematics Supervisor Michael Lemongello also urged the board to consider the challenges posed by the difficult HSPT.

On the trial exam, he noted Belleville students scored 58.0, the state results were 62.6 and the district group was 52.2.

To prove his point, Lemongello read comparison samples of questions from both the MBS and HSPT exams. Those from the latter test were much more difficult and complex.

In a specific example, the teacher noted an HSPT question required students to divide decimals in fraction form.

"Never in all my years of teaching have I seen such demands on a test question," he said.

To meet the challenges posed, since both Marciano and Lemongello predict the failure rate for the HSPT will be higher than that for the MBS, the math

(Please see "BHS scores" on page nine)

## Arnold Schonmuller, M.D.

announces the opening of  
his office  
for the practice of Cardiology  
and Internal Medicine  
242 Washington Avenue  
Nutley, N.J. 07110

Office Hours  
By Appointment

201-284-1444

## GANTNER'S INC.

160 Franklin Ave., Nutley

School Supplies - Stationery - Housewares - Hardware - Paint

ALL BASEMENT ITEMS 20% OFF

Bath Shop	Towels	Blankets	Lamps
Toilet Seats	Rugs	Throw Pillows	Lamp Shades
Hamper	Bed Sheets	Bed Pillows	Luggage
	Infant & Children Clothes		

### PAINT SPECIAL

Rustoleum Spray Enamel	\$2.49
Krylon Spray Enamel	\$1.99
Dutch Boy Latex Flat Wall Paint	\$8.25
Dutch Boy Latex Semi Gloss	\$11.99
Frisco Flat Wall Paint	\$7.99
Frisco Semi Gloss	\$10.49

### SCOTT FERTILIZER

5,000 sq. ft. bags	\$8.99
Mon. & Fri.	9:00 a.m. to 8:15 p.m.
Tues., Wed., Thurs. & Sat.	9:00 a.m. to 5:45 p.m.

667-6622



## Carmines Restaurant & Cocktail Lounge

Introducing  
Our New Continental Chef  
Serving Specials Daily  
Watch For Our Grand Opening

Homemade Italian Cuisine Specializing in Seafood  
Lunch and Dinner Served Daily  
Businessman Luncheon Specials Daily

Open 10 am - 2 am - Monday-Saturday  
12 pm - 2 am Sunday

Catering For All Occasions

• Specializing in After Funeral Luncheons

Reservations Required

118 Franklin Ave., Nutley, N.J.  
661-4333 661-4306

## MAKE MONEY SAVE MONEY

Enroll in the H&R Block Income Tax Course now  
Make money during tax time. Comprehensive  
course taught by experienced H&R Block  
instructors begins soon in your area  
Send for free information

Classes begin week of Oct. 1  
and will be held in Nutley,  
Belleville & Bloomfield

7.5 CEU's Awarded

Contact Our Registration Center  
H&R BLOCK

WHO COULD BE A BETTER  
INCOME TAX TEACHER?

345 Clifton Avenue  
Clifton, N.J. 07011  
365-0111

Please send me free information about your tax preparation  
course, and how I can make money

Name \_\_\_\_\_  
Address \_\_\_\_\_  
City \_\_\_\_\_ State \_\_\_\_\_ Zip \_\_\_\_\_  
Phone \_\_\_\_\_

BT 9/27/84

## VIDEO FLICKS LATEST RELEASES

Big Chill  
Swingshift  
Lassiter  
Reckless  
812

Hotdog  
Splash  
Last American Virgin  
Romancing the Stone

Boys In Company C  
California Suite  
Where The Boys Are  
Against All Odds

### COMING SOON

Forest  
Yentel

Fire Starter  
Cold Sweat

Sixteen Candles  
Alphabet City

"Get 'Em First At Gary's"

Join Our Video Club and Get 2 Rentals Free  
10-20% discount on merchandise and other  
items when you join our video club

### ★SERVICE DEPT. SPECIAL★

Carry In Your Color T.V. Set  
(Receive 10% off on completed repairs)



## Gary's Television

Full Service Entertainment Center  
388 Washington Ave. Belleville 759-2170

Mon. - Fri. 9am-8pm Sat. 9am-4pm



## BILL TONEY'S

### Hot & Cold Catering

For Large Or Small Parties  
All Cooking On Premises  
Featuring Our Old World Italian Recipes

INDIVIDUAL DINNERS AVAILABLE

WE  
DELIVER

667-4877

95 Harrison St., Nutley

Open  
7 Days

# Rate Breaking NEWS!

## Money Market

9.97%

Effective Annual Yield On

9.55%

Minimum Deposit \$2,500

## Six Month CD

12.09%

Effective Annual Yield On

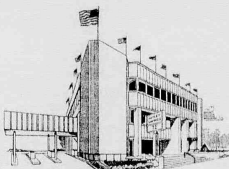
11.75%

Minimum Deposit \$1,000

Whether your investment needs call for instant access with high interest or short and long term guaranteed interest, we have a plan for you. Six different CD terms ranging from 3 to 42 months are now available. Terms of 12 months or longer require only a \$500 minimum deposit and pay today's highest market rates, including a high yield of 12.75% for our 42 month certificate of deposit.

If you're looking to lock in today's best rates, stop in or call Nutley Savings at 661-3200. When it comes to rates... we've got what it takes.

\*Money Market Account interest is compounded and credited monthly. Six Month CD Accounts earn simple interest. There is a substantial penalty for early withdrawal from certificate accounts.  
Rates shown are as of publication date and are subject to change.



## Nutley Savings

AND LOAN ASSOCIATION  
member FDIC

MAIN OFFICE:  
371 Franklin Avenue, Nutley, N.J. 07110 • Phone: 661-3200  
BRANCH OFFICE:  
221 Washington Street, Newark, N.J. 07102 • Phone: 623-7090



**Ready to Sell** — Reading items for the outdoor flea market Oct. 7 at Community Mental Health Services of Belleville, Bloomfield and Nutley are Helen Reynolds and Ann Fericola of Belleville and Dorothy Cocchiola of Nutley. The event will take place on the grounds of the Geriatric Center, corner of Franklin and Belleville Avenues, Belleville.

## Outdoor Flea Market Will Reopen Thrift Shop

An outdoor flea market will be held Oct. 7 on the grounds of the Essex County Geriatric Center, corner of Belleville and Franklin Avenues, Belleville, 10 a.m. to 4

p.m. The event is being sponsored by Community Mental Health Services of Belleville, Bloomfield and Nutley to celebrate the re-opening of its thrift shop, "The Second Time Around" in larger, more convenient quarters. The new location is on the lower floor of the agency building located at the rear of the Geriatric Center grounds. Raindate for the flea market is Oct. 14.

A large number of dealers will be participating in the flea market, offering a variety of wares including craft items and collectibles. Clothing and household items from the thrift shop will be available for sale. Proceeds from the flea market and thrift shop will be used to support the five programs sponsored by Community Mental Health Services, which include an out-patient program, the therapeutic school, family life program, partial care program and the Friendly Visitors program.

"The Second Time Around" is open Tuesdays, Wednesdays and Thursdays from 10 a.m. to 3 p.m. and is staffed by volunteers. Anyone interested in volunteering or donating clothing and household items may call 450-3100 for further information.

HEALTH WISE

By Ralph J. DiMaio D.C.

Nervousness is not a disease in itself. It is symptomatic...an indication that a physical problem exists in the body. Nervousness can be a most unpleasant, even frightening experience. The nervous patient is fidgety, restless. He feels anxious and apprehensive; he finds it difficult to concentrate on whatever he is doing.

Nervousness is too serious a problem to be dismissed as trivial. The nervous system must be healthy in order to carry the flow of nerve energy needed for normal good health.

Chiropractic diagnosis and treatment is often effective in correcting nervous disorders.

**DR. RALPH J. DI MAIO**  
Chiropractor  
625 Joralemon St. 751-8805  
Belleville



**Introductory Offer:**  
**Francine, formerly of**  
**Everything Is Hair**  
**has joined our staff at**  
**FASHION CURL**  
547 Valley Road  
Upper Montclair 744-9699

Coupon  
**10% OFF**  
**All Services With This Coupon**  
(Offer Expires 9/29/84)  
Coupon

## Elaine Bray Will Marry Howard Barnett in June

Mr. and Mrs. William Bray of Reservoir Place announce the engagement of their daughter, Elaine, to Howard Barnett, son of Mrs. Marie Prieto of Belmoir Street and Howard Barnett of Rutherford.

The troth was made known Aug. 8. The wedding is planned

for next June.

Miss Bray, a graduate of Belleville High School and Berkeley Business School, is with a legal firm.

Mr. Barnett, also a graduate of Belleville High School, is with Public Service Electric and Gas Co.

## Share-A-Home Moving Into New Office Oct. 1

Essex County Share-A-Home will move into its new office at 86 Washington St., East Orange Oct. 1. The office is open weekdays from 9 a.m. to 12:30 p.m. Phone 678-9703.

Begun five months ago with the endorsement of the county government, Share-A-Home volunteers have been trying to match interested persons. Members of matches have ranged from young parents with small children to seniors over 80. Often a homeowner who finds it difficult to meet expenses welcomes a person who is having trouble finding a decent, affordable place to live. However, companionship, security or some service may be more important than finances for one or both of the sharers.

When a person phones the office, an interview is arranged. The Share-A-Home coordinator then reviews previous applications to determine compatible home sharing preferences: desired location, costs, age, sex, smoking, drinking, services sought, lifestyles, values, interests and special needs. Potent-

tial sharers are given each other's phone numbers and a meeting suggested where references should be exchanged. The parties discuss details such as temperature preferences, privacy and companionship needs, desired relationships, cooking arrangements, services, daily schedules, etc. Carefully defined mutual expectations are essential for successful sharing. All decisions are the responsibility of the prospective home sharer. S-A-H is merely a facilitator.

From approximately 250 inquiries, Share-A-Home has many more providers (homeowners) than seekers in Newark while the reverse is true in the suburbs. S-A-H cannot work with alcoholics, drug addicts or anyone with severe emotional problems. Otherwise, anyone over 17 is eligible for its service.

## Soundations Fifties Dance This Saturday

Soundations Junior Drum and Bugle Corps will hold its third annual fifties dance this Saturday from 8 to 11 p.m. at VFW Post 275, 17 Belleville Ave.

Live music will be provided by Classics Five O and a hot and cold buffet will be served. Donation is \$15 per person. For information, call 751-5864 or 485-7867.

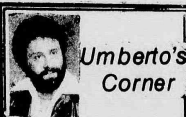


Lucille M. Filangieri

## Lucille Filangieri Receives Degree At William Paterson

Lucille M. Filangieri, daughter of Mrs. Theresa Filangieri of 227 North Belmont Ave. and the late Mr. Joseph Filangieri, received a bachelor of arts degree cum laude in elementary education, a certificate in nursery school and a certificate in reading at the 150th commencement exercises at William Paterson College.

Filangieri, a member of Pi Lambda Theta, was on the dean's list for six consecutive semesters. She is employed at St. Francis Xavier School, Newark.



Umberto's Corner

Dear Umberto,  
I can't believe my girl! My girlfriend just came back from Italy, and she told me that they excavated her father from the grave to put him in a little box and she viewed the caskets. She told me that her father had short hair when he died and when they opened the casket he had long hair. I can't believe it. Does hair grow after death? Do you know anything about resuscitating people in Italy? Hoping that you read this letter.  
Your Reader

Dear Reader,  
Why should I? I know if I was sent a letter! In Italy they excavate dead bodies after 10 years and put the remains in a little box. So when I died I want to be buried here. I have my spot all ready. Over here graves are eternal.  
Yes, in many cases hair does grow after death. Not only the hair grows but even the nails. Not for long and not too long. Hoping I didn't offend you good readers, but, this letter was sent to me. I promised to answer anything.  
Umberto of Naples

**UMBERTO OF NAPLES**  
547 Washington Ave.  
Hair Cutting & Collure.  
549 Washington Ave.  
Unisex Extension  
Haircutters  
Belleville, N.J.  
FREE PARKING  
759-4900  
OPEN SUNDAYS



Jackie Lazaro — Doug Long

## Jackie Lazaro Engaged To Marry Doug Long

The engagement of Jackie Lazaro to Doug Long has been announced by her parents, Mr. and Mrs. Philip Lazaro Sr. of Stephens Street.

The prospective groom is the son of Mr. and Mrs. William Long of Bloomfield.

Miss Lazaro, a graduate of Belleville High School and Mr. Long, an alumnus of Bloomfield High School, are employed by Seifer Distributors of Belleville.

The wedding is planned for June 22, 1985.

CAMEO OPTICS

380 Main St., Belleville  
Grand Union Shopping Center  
751-4600

BACK TO COLLEGE

With  
The Belleville Times  
Our \$7.00  
Special Student Subscription  
Helps You To Feel Closer To Home!

BELLEVILLE TIMES

Student Subscription Dept.  
Box 281, Nutley, N.J. 07110

Enclosed is my check

Please send me The Belleville Times every week.

Name \_\_\_\_\_

Address \_\_\_\_\_

City \_\_\_\_\_ State \_\_\_\_\_ Zip \_\_\_\_\_

Fall  
Exterior  
Housecleaning  
Special

**10% OFF**  
ANY TOTAL JOB



FULLY INSURED — CALL 763-1681  
FOR NO-OBLIGATION ESTIMATE



# One Of The Most Highly-Rated Restaurants In The Metropolitan Area Is Relocating To 800 Bloomfield Avenue.

## *The Best Of New York Comes To Nutley.*

The New York Times,  
Feb. 16, 1977, Lawrence Van Gelder  
"zabaglione - finale to a feast"

The Hudson Dispatch,  
Jan. 7, 1978, Nancy Siracusa  
"a little bit of Italy"

★★★★

New Jersey Monthly,  
April 1979, John Gottfreid  
★★★★ "and a bravissimo"

The New York Times,  
May 27, 1979, B.H. Fussel  
"In West New York:  
Molto Buono!"

★★★



*Onofrio Pellegrini (left) and Armando Cotumaccio*

Italian Tribune,  
Sept. 14, 1979, Alexia Rosa  
"must dine list"

Cue Magazine,  
Oct. 12, 1979, John Marina  
"European professionalism"

The Record,  
May 21, 1982, Rose Marie Black,

★★★

Gourmet Diners Club of America  
Silver Spoon Award 1982

### *Armando Di Villa* Fine Italian Cuisine in the Park

Hours:  
Lunch 11:30 a.m.-2:30 p.m.  
Monday-Friday  
Dinner 5-10 p.m.  
Monday-Thursday  
Fridays & Saturdays 5-11 p.m.  
For Reservations  
Call

667-8899



# Obituaries

## Arthur W. Leytham; Retired Bank Officer

Arthur W. Leytham, formerly of Belleville, died July 12 following a lengthy illness at Gloversville, N.Y. Notice of his death was given during the past week by the Hollenbeck Funeral Home, Gloversville.

Mr. Leytham, who retired in 1976 as vice president of the New Jersey Horizon Bank Corporation, Morristown, had been a member of the Belleville Masonic Lodge and the Fews Smith Memorial Presbyterian Church.

A memorial service is being planned at a future date at the Fews Smith Memorial Church.

Born in 1912 at Indian Orchard, Mass., he was the son of Arthur and Isabelle Leytham.

He died at the Nathan Littauer Hospital, Gloversville.

Mr. Leytham was a graduate of Barringer High School, Newark, and the American Bankers Association of Newark. Prior to joining the Horizon Bank, he had been associated with the Bank of Montclair.

Surviving are his wife, Jessie Dalzell Leytham; two sons, Thomas B. of Chelsea, Vt., and Alan W. of Woodbury Heights, N.J.; and three grandchildren.

## Arthur Dolan, Engineer; Resided Here 70 Years

A Mass for Arthur Dolan, 80, of Belleville was offered Sept. 18 in St. Mary's Church, Nutley.

Mr. Dolan died Sept. 14 in the Orange Memorial Hospital, Orange.

He worked as an engineer in the chemical department for the Wallace & Tiernan Co., Belleville, where he worked for 48 years before retiring in 1969.

Born in Newburgh, N.Y., he came to Belleville 70 years ago.

Surviving is a sister, Mrs. Marie Noble.

## Mrs. Anna Bordeleau

Services for Mrs. Anna M. Bordeleau, 84, of Perth Amboy were held Monday in South Amboy.

Mrs. Bordeleau died last Thursday in the Oakview Nursing Home, Sayreville.

She had been an inspector for the Walter Kidde Co., Inc., Belleville, for many years. Mrs. Bordeleau retired 25 years ago.

She was a member of the Veteran of Foreign Wars Auxiliary in Perth Amboy. Mrs. Bordeleau was a Republican committeewoman in Newark many years ago.

Surviving are a son, John, Jr., two daughters, Mrs. Elizabeth Hand and Mrs. Helen Mandel; six grandchildren and seven great-grandchildren.

## Charles Bogert, Jr.; With Bell Telephone

Charles F. Bogert, Jr., 55, of Belleville died Sept. 23 in the Clara Maass Medical Center, Belleville.

A Mass was offered yesterday morning in St. Peter's Church, Belleville.

He was a repairman for the New Jersey Bell Telephone Co. for the last 31 years. He was a member of the Telephone Pioneers of America, McNulty Chapter, and the St. Peter's Holy Name Society, Belleville.

Born in Passaic, he lived in Belleville for most of his life.

Surviving are his wife, Alison; a daughter, Mrs. Constance DePasquale; a son, Charles, III; a sister, Mrs. Jane Tuttle; and five grandchildren.

## Jack Orlinsky; Was Secretary Of Linen Supply

Services for Jack Orlinsky, 76, of Delray Beach, Fla., formerly an executive with the New Jersey Linen Supply Association, were held Sept. 20 in the Beth Israel-Rubin Memorial Chapel, Delray Beach.

He was secretary of the New Jersey Linen Supply Association, Newark.

Mr. Orlinsky was a past president of Congregation Ahavas Achim of Belleville. He was a member of the Weequahic Oriental Masonic Lodge of Essex County, the Criers Lodge of the Knights of Pythias, New York City, and the Robert Treat Council, Boy Scouts of America.

Surviving are his wife, Henrietta; a daughter, Mrs. Sheila Nadler; a son, Stanley; two sisters, Mrs. Frances Robins and Mrs. Mildred Cohen; two brothers, Alfred and Philip Orlin; and four grandchildren.

## Helen Hudak; Was Employed At Bamberger's

Miss Helen Hudak, 58, of Belleville died Sept. 19 in Columbus Hospital, Newark.

A Mass was offered Saturday in the St. Nicholas Ukrainian Catholic Church, Glen Lyon, Pa.

Miss Hudak was a clerk for L. Bamberger's in Newark for the past 29 years.

Born in Glen Lyon, she lived in Belleville for 30 years.

Surviving are two brothers, Harry and John; and two sisters, Miss Joan and Mrs. Barbara Warden.

## Mrs. Hazel McCaffery

Mrs. Hazel McCaffery, 72, of Belleville died Saturday in Overlook Hospital, Summit.

Services were held Tuesday in the Megaro Memorial Home, 503 Union Ave., Belleville.

Surviving are her husband, George; two sons, George and John; two daughters, Mrs. Carol Frank and Mrs. Anna Zeitler; a brother, Arnold; a sister, Mrs. Ruth Svehla; and eight grandchildren.

**Auto Painting by**

**Maaco**

**We've got a paint service to fit every budget.**

<b>CONGRESSIONAL</b> Our economy enamel paint service	<b>99<sup>95</sup></b>	<b>PRESIDENTIAL</b> Our most popular value	<b>249<sup>95</sup></b>
<b>AMBASSADOR</b> Quality preparation & painting for those on a budget	<b>169<sup>95</sup></b>	<b>SUPREME</b> High quality work with extended durability	<b>349<sup>95</sup></b>

Free estimates on all bodywork.  
SHOP HOURS: Mon. thru Fri. 8am-5:30pm; Sat. 9am-1pm  
Check the following locations for participating centers.

**NUTLEY**  
**113 E. Centre St.**  
(behind 67 E. Centre St.)  
**235-0801**

**\$100 Off Supreme**  
Expires 10/27/84

MAACO Auto Painting & Bodywork is an independent franchise of MAACO Corporation. Photos and Text © 1984 MAACO



**Some Things Just Can't Be Imitated...**

- \* Delicious Food
- \* Fabulous Service
- \* Special Breakfast Menu
- \* All Baking Done On Premises

**Open 24 Hours — Plenty of Free Parking**  
**Seven Days A Week**

**We Appreciate Your Patronage**

**NEVADA DINER RESTAURANT**  
**293 BROAD STREET**  
**BLOOMFIELD 743-9393**  
AFFILIATED ONLY WITH STATE LINE DINER  
RT. 17, MAHWAH, N.J. & NEVADA DINER, BLFD.

**THOMAS P. ZAMPINO**

**AND**

**PAUL J. JACKSON**

**ARE PLEASED TO**

**ANNOUNCE THE**

**FORMATION OF A**

**PARTNERSHIP FOR**

**THE PRACTICE OF LAW**

**JACKSON & ZAMPINO**

**653 FRANKLIN AVENUE**  
**NUTLEY, NEW JERSEY 07110**  
**(201) 284-1099**



**Need a Mortgage Loan for that Home of your own?**

**We'll hand you the money on realistic, competitive terms!**

Call or visit our nearest office now

**Spencer Savings**  
and Loan Association

FARFIELD • LODI • WALLINGTON • SADDLE BROOK • CLIFTON • LYNDHURST • BELLEVILLE  
PHONE NUMBERS FOR ALL OFFICES • 772-6700

Member: FSLA





# Here's just a sample of what you'll find in the New Price Finder for Specials.

**HAPPY NEW YEAR**  
TO ALL OUR JEWISH FRIENDS  
As the Shofar sounds this Rosh Hashanah, may it herald a year of peace and understanding for all mankind. May you also be inscribed in the Book of Life for a New Year blessed with good health and prosperity.

Signature - 3-Lb. Roll  
**Fresh Ground Beef**  
**127**  
Ea. Lb.

Solid White - In Oil or Water  
**Bumble Bee Tuna**  
**99**  
6 1/2-oz. Can

Super **GRAND UNION** Coupon  
**Buy One Get One FREE!**  
Get One 8-oz. Btl. - French, Caesar, 1,000 Island, Red Wine Vinegar and Oil or  
**Pfeiffer Italian**  
When you buy one 8-oz. Btl. of the above Pfeiffer Dressings at our regular low price  
No Minimum Purchase Required With This Coupon  
Good Sept. 23 Thru Sept. 29. Limit One Coupon Per Customer.

Assorted Flavors  
**Hi-C Fruit Drink**  
**59**  
1-Qt. 14-oz. Can

Campbell's - Snow White  
**Fresh Mushrooms**  
**99**  
12-oz. Pkg.

Super **GRAND UNION** Coupon  
Regular or Caffeine Free  
**Coke, Diet Coke or Tab**  
**79**  
One 2-Liter Btl.  
No Minimum Purchase Required With This Coupon  
Good Sept. 23 Thru Sept. 29. Limit One Coupon Per Customer.

Chilled  
**Citrus Hill Orange Juice**  
**169**  
Half Gal. Cont.

U.S.D.A. Choice Beef Roast  
**Semi-Boneless Chuck**  
**147**  
Lb.

Assorted Flavors  
**Louis Sherry Ice Cream**  
**199**  
Half Gal. Cont.

## THE BUTCHER BLOCK

Fresh Pork Loin - Center Cut  
**Boneless Pork Chops**  
**299**  
Lb.

U.S.D.A. Choice Beef  
**First Cut Chuck Steak**  
**119**  
Bone Lb.

10 to 14 Lbs.  
**Fresh Grade 'A' Turkeys**  
**87**  
Lb.

Gov't Grade 'A'  
**Fresh Whole Fowl**  
**69**  
Lb.

**Chuck Roast** 129  
U.S.D.A. Choice Beef - Center Cut Blade Bone Lb.  
**Chuck Steak** 159  
U.S.D.A. Choice - Semi-Boneless Beef Lb.  
**Chuck Cubed** 219  
U.S.D.A. Choice - Boneless Beef Steak Lb.  
**Fresh Brisket** 137  
U.S.D.A. Choice - Boneless Beef Thick Cut Lb.  
**Fresh Brisket** 199  
U.S.D.A. Choice - Boneless Beef Thin Cut Lb.  
**Wilson Bacon** 149  
Sliced - Certified 1-Lb. Pkg.  
**Variety Pack** 199  
Oscar Mayer - 5lb. Round, Square or Beef 12-oz. Pkg.  
**Family Pack Savings**  
SAVE 10¢ A Lb. ON PKGS. OF 3 LBS. OR MORE.  
**Chicken** 117  
Holly Farms Combo Grade 'A' Fresh 3 breasts split with ribs, 3 drums, 3 thighs Ea. Lb.  
**Top Chuck Steak** 199  
U.S.D.A. Choice - Boneless Beef Lb.  
**Pork Chops** 147  
Combo - Loin, Rib End & Center Cut Ea. Lb.

**Fresh Duckling** 99  
U.S.D.A. Choice - 4 to 5 Lbs. or Frozen Lb.  
**Perdue Fowl** 69  
Gov't Grade 'A' - Frozen Lb.  
**Kosher Turkeys** 99  
Hebrew National - Frozen 10 to 16 Lbs. Lb.  
**Sliced Boloney** 135  
Grand Union 1-Lb. Pkg.  
**Cameco Ham** 279  
Sliced - Water Added 1-Lb. Pkg.  
**Wholesale Savings**  
**Tenderloin Whole** 387  
U.S.D.A. Choice - Boneless Beef 5-7 Lbs. Lb.  
Untrimmed Cry-O-Vac. Custom Cut.  
**Fresh Brisket** 137  
U.S.D.A. Choice - Boneless Beef Whole 7 to 10 Lbs. Untrimmed Cry-O-Vac. Lb.

**CORNER DELI**  
A VARIETY OF SPECIALS WITH SERVICE DELI  
**Wilson's Ham** 199  
Honey Cured - Water Added Half Lb.  
**Potato Salad** 67  
Made with Hellmann's Mayonnaise Lb.  
**Liverwurst** 119  
Tabin's First Prize - Mother Goose Half Lb.  
**Bologna** 139  
Deli Quality Lb.

**DATE-LINE DAIRY**  
**Yoplait** 2 For 89  
Original Yogurt - Ass't. Flavors 6-oz. Conts.  
**Sorrento Ricotta** 429  
Whole Milk or Part Skim 1-Lb. Pkg.  
**Mozzarella** 259  
Sorrento - Whole Milk or Part Skim 1-Lb. Pkg.

## PRODUCE

Northwest  
**Sweet Luscious Bartlett Pears**  
**49**  
Lb.

U.S. No. 1  
**Russet Baking Potatoes**  
**99**  
5 Lb. Bag

**Italia Grapes** 99  
California Lb.  
**Pascal Celery** 49  
New York State - Large 24 Size Each  
**Raspberries** 169  
California - Sweet Half Pt. Cont.  
**Cherry Tomatoes** 99  
Cocktail - Fresh Red 1-Pt. Bskt.  
**Concord Grapes** 189  
New York State 2-Pt. Bskt.  
**Fresh Carrots** 59  
Michigan - Tender 2-Lb. Bag  
**McIntosh Apples** 99  
U.S. No. 1 - 2 1/4-In. Min 3-Lb. Bag  
**Belgian Endive** 199  
Imported - Make a Salad Special Lb.

## GROCERIES

Regular or Cinnamon  
**Quaker Life Cereal**  
**159**  
1-Lb. 4-oz. Pkg.

Dinner  
**Kraft Macaroni and Cheese**  
**38**  
7 1/2-oz. Pkg.

For Scouring  
**Comet Cleanser**  
**100**  
3 14-oz. Conts.

Regular or Scent II  
**Disinfectant Lysol Spray**  
**179**  
12-oz. Cont.

**Applesauce** 69  
Mott's 1-Lb. 9-oz. Jar  
**Heinz Ketchup** 59  
America's Favorite 14-oz. Btl.  
**White Rock Cola** 99  
or Ginger Ale, Orange or Root Beer 2-Liter Btl.  
**Chips Deluxe** 119  
Keebler or Pacan Sandies 12-oz. Pkg.  
**Breakfast Bars** 149  
Carnation - Choc. Chip or Honey Nut Pkg. of 6  
**Lysol Cleaner** 119  
Basin, Tub & Tile 1-Lb. 14-oz. Cont.  
**Lysol Cleaner** 169  
Deodorizing Liquid 1-Pt. 12-oz. Cont.  
**Bowl Cleaner** 79  
Lysol 16-oz. Cont.

**Archway Cookies** 129  
Assorted Varieties 1-Lb. Pkg.  
**7-Seas Dressing** 119  
Assorted Varieties, Except Blue Cheese 1-Pt. Btl.  
**Carolina Rice** 199  
Extra Long Grain 5-Lb. Pkg.  
**RC 6 Pack** 179  
or Diet or Regular or Sugar Free RC100 12-oz. Cans  
**Sahara Bread** 79  
Thomas 12-oz. Pkg.  
**Purina Hi-Pro** 699  
Dry Dog Meal 25-Lb. Pkg.  
**Liquid Gold** 279  
Scott's Furniture Polish - Aero 14-oz. Cont.  
**Purex Bleach** 79  
Liquid 1-Gal. Cont.

## THE BIG FREEZER

**Apple Juice** 99  
Seneca 1-Pt. Can  
**Celentano Ravioli** 79  
Mini - Cheese 9-oz. Pkg.  
**Ice Cream Bars** 199  
Klondike - Choc. Krispy or Plain 1-Lb. 4-oz. Pkg.

**Seabrook Broccoli** 89  
Florets 10-oz. Pkg.  
**Golden Blintzes** 143  
Cheese or Blueberry 15-oz. Pkg.  
**Buitoni Lasagne** 299  
Deep Dish 2-Lb. 12-oz. Pkg.

## General Merchandise

**Listerine** 199  
Mouthwash 1-Pt. 2-oz. Btl.  
**Tylenol Tablets** 349  
Extra Strength Cont. of 60  
**Styling Foam** 259  
Alberto VO5 - Mousse 6-3-oz. Cont.

**GRAND UNION** Coupon  
**15¢ Off**  
With This Coupon And Purchase Of Two 1,000 Sheet Rolls - White or Colors  
**Scotttissue Bath Tissue**  
Coupon Good Sept. 23 Thru Sept. 29. Limit One Coupon Per Customer.

**GRAND UNION** Coupon  
**30¢ Off**  
With This Coupon And Purchase Of One 1-Qt., 1-Pt. Btl. - Polyunsaturated  
**Mazola Corn Oil**  
Coupon Good Sept. 23 Thru Sept. 29. Limit One Coupon Per Customer.

**GRAND UNION** Coupon  
**15¢ Off**  
With This Coupon And Purchase Of One 12-oz. Pulp or Reduced Can. Reg. More Acid Frozen  
**Minute Maid Orange Juice**  
Coupon Good Sept. 23 Thru Sept. 29. Limit One Coupon Per Customer.

**GRAND UNION** Coupon  
**30¢ Off**  
With This Coupon And Purchase Of One 1-Lb. Can. - Regular or Automatic Disp  
**Folger's Coffee**  
Coupon Good Sept. 23 Thru Sept. 29. Limit One Coupon Per Customer.

**FOR STORE INFORMATION CALL TOLL-FREE 1-800-221-1835**  
**GRAND UNION**  
MOST GRAND UNIONS ARE OPEN 24 HOURS  
Check your local Grand Union for store hours.  
Prices effective Sunday, Sept. 23 thru Saturday, Sept. 29 at all Grand Union stores in New Jersey, Rockland and Orange Counties. In order to assure a sufficient quantity of sale items for all our customers, we reserve the right to limit sales to 3 packages of any item unless otherwise noted. Not responsible for typographical errors. For store information call toll free, 1-800-221-1835.



# Volleyball Wizards Capture Three Quick Victories Here

While the names Faith Adams and Allison Burden are a thing of the past in Belleville volleyball, the girls' volleyball team continues to excel, winning three matches in their first four attempts. Grace Worley's band of wizards have been particularly impressive in the last five days, sweeping past Montclair and Immaculate Heart after splitting the first two matches with Bloomfield and Passaic Valley.

The girls battled Passaic yesterday and travel to Nutley tomorrow afternoon for a 4 p.m. start. On Saturday, the girls travel to William Paterson College for a tournament. On Monday, it's back to conference action with a home match against always tough Paterson Kennedy. Next Wednesday, the girls battle Passaic, also at home.

Belleville opened the season, with an impressive sweep of Passaic Valley, then had a further returned to them in shocking manner by a very good Bloomfield Bengal squad. "Bloomfield just demolished us," said Worley. As nervous as we were for the match, Bloomfield was just as good. Offensively and defensively, we just weren't there. We weren't ready for the match and Bloomfield played very well."

The Passaic Valley match saw excellent play from Debbie Worley and Donna Brooks translate into an impressive victory. "Debbie and Donna are forming a very impressive team," said Worley. "They are both tough up front and both are hitting very well."

After the Bloomfield debacle, Belleville went back to the drawing board and implemented a new offense. "We changed from a 4-2 to a 5-1," recalled Worley. "With the new offense, Debbie is the only setter and everyone has a new position. We practiced on it for two hours on Wednesday and Thursday and used it for our match with Montclair last Friday. It worked very well."

Indeed, Belleville came out in front of the match, sweeping an excellent Mountie team and winning its second match in three tries. Last Monday, the girls boosted their team record to 3-1 with another two-game sweep, this time against Immaculate Heart of Westwood.

In that match, Brooks was awesome at the net and junior Sheri Phelps did a fine job at the net. Worley also noted that sophomore Christine Melillo has come around quite nicely over the

last two weeks. "She has developed a good serve, is getting off her feet and is spiking very well. She has good hits and is blocking well."

Melillo's improvement should help Belleville as the season progresses and the competition gets increasingly tougher.

Also doing a fine job has been senior Liz Goldrick. "Liz has good mobility and has been platooning with Chris so far," said Worley. "She gives us a good back line defense and her experience will certainly help us."

Although Worley admits that her team is rebuilding, the

Wizards of Belleville continue to find that winning formula against some very good competition.

## Rec. Dept. Lists Fall Schedule

The Belleville Recreation Department has announced the start of its fall activities schedule.

The girls' cheerleading clinic for ages 6-14 is taking place on Thursdays at school 3 from 6:30-8:30 p.m. beginning September 27.

Girls' Twirling for ages 6-14 will take place on Mondays from 6:00-7:30 p.m. at school 4 starting on October 1, while junior girls twirling for ages 6-10 will take place on Wednesday beginning October 3 from 6:0-7:30 p.m. at school 7, and senior girls twirling for ages 11-14 will commence on Thursday, October 4, from 6-7:30 p.m. at school 7.

Girls basketball clinic for grades 3-8 will take place on Tuesdays from 6:30-8:30 p.m. at the Middle School girls' gym beginning on October 2. Boys basketball clinic/league for grades 3-8 will take place on Mondays from 6:30-8:30 at the middle school's boys gym starting on October 1.

Color Guard Clinic will start on Wednesday, October 10 from 6:30-8:00 p.m. at school 4, for girls ages 8-14 and ladies open volleyball for adults will begin on Monday, October 15 from 7:30-9:30 p.m. at the middle school girls gym.

For more information on upcoming programs like Aerobics, volleyball leagues and gym nights please call 759-3142 between 8:30-4 p.m., Monday through Friday.



**Walt Disney's  
WORLD  
ON ICE**

Produced by IRVIN FELD and KENNETH FELD

ROSEMARY SUMMERS  
World's Champion  
(Three & Four Positions)

**LIVE IN COLOR**

*It's the Biggest Party of Them All!  
Come Celebrate Donald Duck's 50th!*

**WORLD PREMIERE!**  
**Tue. SEPT. 25**  
**thru Sun. OCT. 7**  
★ PERFORMANCES ★

**ALL TICKETS HALF-PRICE!**  
**WPIX-TV FAMILY NIGHT**

Tue. SEPT. 25	7:30PM
Wed. SEPT. 26	7:30PM†
Thu. SEPT. 27	7:30PM†
Fri. SEPT. 28	1:30PM† 7:30PM†
Sat. SEPT. 29	10:30AM† 2:30PM 7:30PM
Sun. SEPT. 30	1:00PM 5:00PM
Wed. OCT. 3	7:30PM†
Thu. OCT. 4	7:30PM†
Fri. OCT. 5	7:30PM†
Sat. OCT. 6	10:30AM† 2:30PM 7:30PM
Sun. OCT. 7	1:00PM 5:00PM

†SAVE \$2.50 On Kids Under 12!  
\*\*\*\*\* **YOUR BEST ENTERTAINMENT VALUE!** \*\*\*\*\*  
ALL SEATS RESERVED  
**\$6.50 - \$8.50 - \$9.50 - \$10.50**  
NO INCREASE IN PRICES!  
\*\*\*\*\* **2 WAYS TO GET YOUR TICKETS** \*\*\*\*\*

**IN PERSON:** MADISON SQUARE GARDEN BOX OFFICE and All Outlets including Most Sam Goody Stores, Kelly Film Expressibles, Drug Fair Stores and TSS Seedlings.  
For Location Nearest You: (212) 888-9000

**BY PHONE:** (212) 888-9000 Daily 10 AM to 6 PM • Major Credit Cards Accepted (\$1.00 per Ticket Service Charge on Phone Orders)

Information: (212) 564-4400  
Group Rates: (212) 563-8080

 madison square garden

\*\*\*\*\* **HOLIDAY ONLY** \*\*\*\*\*

**LEGAL NOTICE**  
TOWNSHIP OF BELLEVILLE  
PLANNING BOARD  
NOTICE OF HEARING  
PLEASE TAKE NOTICE  
That the undersigned has applied to the Planning Board of the Township of Belleville, N.J., to obtain approval for subdivision of lots on property located at Block 86, lot 18 (corner of Essex & Joyce Kilmer Streets) and to obtain a variance for lot width.  
This application is on the Clerk's Calendar No. 1984-08-01, and is set for a public hearing on October 11, 1984 at 8 p.m. in the Meeting Room, 383 Washington Avenue, Belleville, New Jersey. At which time you may appear either in person, or by agent, or by attorney, and present any objections which you might have to the granting of this application.  
This notice is sent to you by the applicant, by order of the Belleville Planning Board.  
Respectfully,  
ADPRINT, INC.  
The Belleville Times  
Sept. 27, 1984  
Fee: No. 884-405

**BELLEVILLE, BLOOMFIELD, CEDAR GROVE, EAST ORANGE, IRVINGTON, LIVINGSTON, MAPLEWOOD, MILBURN, MONTCLAIR, NEWARK, NUTLEY, ORANGE, SOUTH ORANGE, VERONA, WEST ORANGE.**  
The Municipal Clerk's offices in the following municipalities will be open from 4 P.M. to 9 P.M. on October 9, 1984.  
CADDWELL, ESSEX FELS, FAIRFIELD, GUEN RIDGE, NORTH CADDWELL, ROSELAND, WEST CADDWELL.  
**REGISTRATION BY MAIL**  
Anyone wishing to register by mail can do so by requesting mail registration forms from the Commissioner of Registration, 465 Martin Luther King, Jr. Blvd., Newark, New Jersey, 07102, or by calling 421-5030.  
**VOTING REQUIREMENTS**  
To vote in Essex County a person must be a citizen of the United States, a resident of New Jersey and Essex County for 30 days, and shall have attained the age of 18 years by General Election Day, November 6, 1984.  
**TRANSFER OF REGISTRATION**  
A voter who is registered to vote in one district of Essex County and who moves his residence to another part of Essex County must transfer his registration to his new address. This can be accomplished by informing the Commissioner of Registration in writing. Such notice will be signed by each voter. Change of Residence cards can be obtained by calling 421-5030.  
**THE DEADLINE TO REGISTER OR TRANSFER IS OCTOBER 9, 1984.**  
A General Election will be held on November 6, 1984, between the hours of 7 A.M. and 8 P.M. for the election of candidates for the General Election. The public and party offices to be filled are as follows:  
(1) President  
(2) Vice President  
(3) U.S. Senate  
(4) Members of Congress  
(5) Register  
(6) Freeholders  
Voters may obtain the location of the polling place in the district in which they reside by calling 621-5070, 5071, 5072, 5073, 5074 daily, 9:00 A.M. to 4:00 P.M., except Saturdays and Sundays.  
**ESSEX COUNTY BOARD OF ELECTIONS**  
EDWARD A. DOWNEY, CLERK  
The Belleville Times  
Sept. 27, 1984  
Fee: 534-31 No. 884-393

**SHERIFF'S SALE**  
SHERIFF (CA) C-87  
SUPERIOR COURT OF NEW JERSEY, CHANCERY DIVISION, ESSEX COUNTY, NEWARK, N.J., 07102 THE NATIONAL STATE BANK, PLAINTIFF vs. MATTHEW RISHER et al., et al., DEFENDANTS, Execution For Sale of Mortgaged Premises.  
By virtue of the above stated writ of Execution to me directed, I shall expose for sale by Public Auction, in SHERIFF'S OFFICE, Essex County Court Building in Newark, on Tuesday the 23rd day of October next, at one thirty P.M. (prevailing Time).  
Property to be sold is located in the City of Newark, County of Essex, and State of New Jersey.  
Premises is known as: 560 562 Broadway, Any, s File #2922  
Lot 462 Block #629  
Approx. Dimensions 50' x 100'  
Nearest Cross Street: Delaware Avenue East Side, Newark, N.J.  
The approximate amount of the judgment to be satisfied by said sale is the sum of FORTY SEVENTHUSAND EIGHT HUNDRED TWELVE DOLLARS AND TWENTY TWO CENTS (\$47,822.22), together with the costs of this sale.  
The Sheriff reserves the right to adjourn the sale from time to time as provided by law.  
Newark, N.J., September 17, 1984.  
THOMAS J. D'ALESSIO, Sheriff  
Edward Cosel, Attorney  
The Belleville Times  
Sept. 27, 1984  
Oct. 4, 11, 18, 1984  
Fee: 573-32 No. 884-388

**Featuring Sats. Only Starting Sept. 29**


**FALL FOOD FESTIVAL**

Prime Rib	6 oz. Lobster Tail	Chicken Maro'
2 Complete Dinners	\$12 <sup>95</sup>	\$11 <sup>95</sup>
\$16 <sup>95</sup>	Surf & Turf \$14 <sup>95</sup>	A Tasty Alternative

Sure to Please

Plus: Other delectables to choose from

409 Franklin St.  
Bloomfield, N.J.  
R.S.V.P. 429-9246

  
**Restaurant and Lounge**

**Featuring Sats. Only Starting Sept. 29**


**FALL FOOD FESTIVAL**

Prime Rib	6 oz. Lobster Tail	Chicken Maro'
2 Complete Dinners	\$12 <sup>95</sup>	\$11 <sup>95</sup>
\$16 <sup>95</sup>	Surf & Turf \$14 <sup>95</sup>	A Tasty Alternative

Sure to Please

Plus: Other delectables to choose from

409 Franklin St.  
Bloomfield, N.J.  
R.S.V.P. 429-9246

  
**Restaurant and Lounge**

**Featuring Sats. Only Starting Sept. 29**


**FALL FOOD FESTIVAL**

Prime Rib	6 oz. Lobster Tail	Chicken Maro'
2 Complete Dinners	\$12 <sup>95</sup>	\$11 <sup>95</sup>
\$16 <sup>95</sup>	Surf & Turf \$14 <sup>95</sup>	A Tasty Alternative

Sure to Please

Plus: Other delectables to choose from

409 Franklin St.  
Bloomfield, N.J.  
R.S.V.P. 429-9246

  
**Restaurant and Lounge**

# MORE!

## From BIGELOW MOTORS

More Deals!  
More Savings!  
More Selection!  
More Service!  
More for You!



*Fifth Avenue*

**Loaded With '84 Leftovers**  
**You Pick the Car!**  
**You Pick the Price!**  
**"LEASE OR BUY"**

**CHRYSLER PLYMOUTH**

**BIGELOW MOTORS**  
50 Washington Ave., Belleville  
"Same Owners Since 1939" 759-4220

**PUBLIC NOTICE**  
The following Ordinance was passed on second and final reading at a meeting of the Board of Commissioners of the Township of Belleville, held on Tuesday evening, September 25, 1984, having been read in its final form at least one week prior thereto and is therefore now in law and hereby published according to law.  
An Ordinance Authorizing the Mayor and Township Clerk to Execute an Agreement With Essex County for Cooperative Participation in the Community Development Block Grant Program Pursuant to the Interlocal Services Act.  
Comm. Ralph J. DiRuggiero Yes  
Comm. Joseph A. Grande Yes  
Comm. Joseph P. McGinney Yes  
Comm. Michael P. Pizzi Yes  
Mayor Michael V. Moratti Yes  
Passed First Reading: September 11, 1984  
Passed Second Reading: September 25, 1984  
Adopted: September 25, 1984  
Attest: Mary Lou Hood, Township Clerk  
The Belleville Times  
Sept. 27, 1984  
Fee: No. 884-407

**VOTERS**  
**PUBLIC NOTICE TO VOTERS OF ESSEX COUNTY**  
**REGISTRATION OF VOTERS**  
Registration of voters for the General Election, November 6, 1984, will be conducted at the Office of the Commissioner of Registration, Room 421, Hall of Records, 465 Dr. Martin Luther King, Jr. Blvd., Newark, or at the Municipal Clerk's Office in the voters community, each week day between the hours of 9 A.M. to 4 P.M.  
**VOTING REGISTRATION**  
For the convenience of the voter, the Office of the Commissioner of Registration will be open from 9 A.M. to 9 P.M. on September 17, 23, 30, 4, 5, and Tuesday, October 9, 1984. The Municipal Clerk's office in the following municipalities will be open from 9 A.M. to 9 P.M. on October 4, 5 and 9, 1984.

**PUBLIC NOTICE**  
The following Ordinance was passed on second and final reading at a meeting of the Board of Commissioners of the Township of Belleville, held on Tuesday evening, September 25, 1984, having been read in its final form at least one week prior thereto and is therefore now in law and hereby published according to law.  
An Ordinance Authorizing the Mayor and Township Clerk to Execute an Agreement With Essex County for Cooperative Participation in the Community Development Block Grant Program Pursuant to the Interlocal Services Act.  
Comm. Ralph J. DiRuggiero Yes  
Comm. Joseph A. Grande Yes  
Comm. Joseph P. McGinney Yes  
Comm. Michael P. Pizzi Yes  
Mayor Michael V. Moratti Yes  
Passed First Reading: September 11, 1984  
Passed Second Reading: September 25, 1984  
Adopted: September 25, 1984  
Attest: Mary Lou Hood, Township Clerk  
The Belleville Times  
Sept. 27, 1984  
Fee: No. 884-407

**VOTERS**  
**PUBLIC NOTICE TO VOTERS OF ESSEX COUNTY**  
**REGISTRATION OF VOTERS**  
Registration of voters for the General Election, November 6, 1984, will be conducted at the Office of the Commissioner of Registration, Room 421, Hall of Records, 465 Dr. Martin Luther King, Jr. Blvd., Newark, or at the Municipal Clerk's Office in the voters community, each week day between the hours of 9 A.M. to 4 P.M.  
**VOTING REGISTRATION**  
For the convenience of the voter, the Office of the Commissioner of Registration will be open from 9 A.M. to 9 P.M. on September 17, 23, 30, 4, 5, and Tuesday, October 9, 1984. The Municipal Clerk's office in the following municipalities will be open from 9 A.M. to 9 P.M. on October 4, 5 and 9, 1984.

**PUBLIC NOTICE**  
The following Ordinance was passed on second and final reading at a meeting of the Board of Commissioners of the Township of Belleville, held on Tuesday evening, September 25, 1984, having been read in its final form at least one week prior thereto and is therefore now in law and hereby published according to law.  
An Ordinance Authorizing the Mayor and Township Clerk to Execute an Agreement With Essex County for Cooperative Participation in the Community Development Block Grant Program Pursuant to the Interlocal Services Act.  
Comm. Ralph J. DiRuggiero Yes  
Comm. Joseph A. Grande Yes  
Comm. Joseph P. McGinney Yes  
Comm. Michael P. Pizzi Yes  
Mayor Michael V. Moratti Yes  
Passed First Reading: September 11, 1984  
Passed Second Reading: September 25, 1984  
Adopted: September 25, 1984  
Attest: Mary Lou Hood, Township Clerk  
The Belleville Times  
Sept. 27, 1984  
Fee: No. 884-407

**VOTERS**  
**PUBLIC NOTICE TO VOTERS OF ESSEX COUNTY**  
**REGISTRATION OF VOTERS**  
Registration of voters for the General Election, November 6, 1984, will be conducted at the Office of the Commissioner of Registration, Room 421, Hall of Records, 465 Dr. Martin Luther King, Jr. Blvd., Newark, or at the Municipal Clerk's Office in the voters community, each week day between the hours of 9 A.M. to 4 P.M.  
**VOTING REGISTRATION**  
For the convenience of the voter, the Office of the Commissioner of Registration will be open from 9 A.M. to 9 P.M. on September 17, 23, 30, 4, 5, and Tuesday, October 9, 1984. The Municipal Clerk's office in the following municipalities will be open from 9 A.M. to 9 P.M. on October 4, 5 and 9, 1984.











REAL ESTATE REAL ESTATE REAL ESTATE REAL ESTATE REAL ESTATE REAL ESTATE REAL ESTATE REAL ESTATE

180 Centre St.  
Nutley, N.J. 07110  
667-3440

# GEORGE E. MAC MUNN CO.

REALTORS

100 Woodport Road  
Sparta, N.J. 07871  
729-8727



**JUST LISTED - CUSTOM BUILT ONE OWNER** home in Spring Garden School area of NUTLEY. Impressive room size, 2 1/2 baths, 4 bedrooms, lovely family room, immaculate condition throughout. ASKING \$145,900.



**JUST LISTED - 2 FAMILY IN BELLEVILLE.** Only 24 years old - 5 on 1st, 3 on second, immaculate condition, many extras. ASKING \$109,900.

Your Home  
Could Be  
Featured  
Here.  
List With  
Mac Munn

Look for This Emblem



REALTOR®

**JUST LISTED - MINI ESTATE IN ANDOVER TWP.,** for the discriminating buyer. Beautiful ranch on over 4 acres affords privacy and gracious living; 3 bedrooms, 2 fireplaces, (one in 31' master bedroom) 2 full baths, gazebo overlooking 50' inground pool. JUST MINUTES TO RT. 80. ASKING \$145,900.

**SAIL AT SUNSET...** or any time of the day from this 4 bedroom, 3 bath LAKE MOHAWK-SPARTA Lakefront! Sparkling lake views can be enjoyed from most rooms... charming living room with stone fireplace, gracious din. rm., ultra mod kitchen with sliders to lovely deck. CALL NOW for your personal inspection.

## Pretty as a picture.



LOTS to offer - lovely expanded cape on 3 lots, 4 B's, den, finished basement with wet bar, 3 car garage and much more! Call today for appointment to see this beautifully decorated home. \$124,900.00.

**Century 21** WAYNE K. THOMAS  
REALTORS

277 Broad Street Bloomfield, New Jersey  
(201) 429-7400

"Each office independently owned and operated"  
MEMBER OF BLOOMFIELD GLEN RIDGE,  
NUTLEY, BELLEVILLE BOARD OF REALTORS

REAL ESTATE	REAL ESTATE	WANTED TO RENT
<b>FOR SALE</b>	<b>FOR SALE</b>	<b>ROOMS, APARTMENTS, HOUSES NEEDED FOR CORPORATE TRANSFERS, SHORT &amp; LONG TERM. NO FEE. CONFIDENTIAL. METROPOLITAN RELOCATION CONSULTANTS, INC. 722-6550</b>
<b>NUTLEY OFFERS WANTED ON CENTER HALL COLONIALS</b> 8 rm. Colonial in move-in condition. 1 1/2 bath with laundry rm. mod eat-in & TV rm. alcove on 1st. 2 baths, 3 bedrooms on 2nd. Fin rec rm in basement. 1 car garage. Call to see.	<b>BELLEVILLE 2 FAMILY HOME FOR SALE BY OWNER</b> On 30 x 130 lot. In prime residential location. One way street. Near schools, bus lines & shopping. 2 separate gas units. All alum. exterior, with storm. Enclosed front porch. 1st fl. 5 rms with mod. bath. 2nd fl. all mod. kit, mod. bath, dining room, 2 bedrooms. Fine finished room on 3rd with large attic. Long paved driveway. New 10 x 14 storage shed. Call for appt. 759-6442	<b>RESPONSIBLE RETIRED LADY DESIRES 2 1/2 OR 3 ROOMS. NO PETS OR CHILDREN. APPROX. \$125, 743-0000 OR 338-6692 EVEN. &amp; WEEK ENDS.</b>
<b>CARL A. ORECHIO AGENCY</b> 667-7733 Eves: Marie 667-8189	<b>BELLEVILLE TOWN HOUSE LUXURY</b> Beautifully maintained. 8 month old town house with Italian tile floor, central air cond., attached garage family room with fireplace well appointed kitchen with balcony, master bedroom with bath. Convenient to shopping. Golf course and all transportation. \$119,900. MTC-8383 <b>WEICHERT CO. REALTORS</b> 272 Belleville Ave. Upper Merion, N.J. 746-1515	<b>ARTIST SEEKS SPACE, GARAGE OR ROOM FOR STUDIO. CALL 667-5372 OR 212-966-6676 DAYS.</b>
<b>BELLEVILLE TWO FAMILY JUST LISTED</b> Be the first to see this 4 over 4 two family with separate all. Apt is possible 3rd unit. Property is zoned for 3 family. Owner asking \$110,000.	<b>ARCHITECTURE &amp; PLANNING HOME &amp; BUILDING INSPECTIONS</b> KENNETH J. STOKAY AIA ROBERTED N. AIA 661-2708	<b>REAL ESTATE WANTED</b>
<b>ONE FAMILY</b> 106 STEPHEN ST. 1 1/2 rm. din. rm. 3 1/2 bedrooms & bath. 75x97 lot. Drive by call Realtor.	<b>SEEKING A ONE FAMILY HOME ON AN OVERSIZED LOT IN NUTLEY</b> PRINCIPALS ONLY P.O. BOX 597 NUTLEY	<b>FURNISHED ROOMS</b>
<b>Real Estate Insurance</b> 759-1087	<b>SENIOR CITIZENS</b> (not in conflict with law) Luxurious accommodations. Excellent food, residential security. Rate from \$425 mo. for room, food & laundry. 484-3674	

**NUTLEY OPEN HOUSE**  
Sat. 9:28 - 9:30  
10am to 6pm  
ONE FAMILY, spacious 7 rm. well kept house offers secluded 50 x 150 yd. w/garage, porch, outdoor gas, bbq grill, wood burning fireplace, parquet floors, mod eat in kit, paneled LR & DR, 4 bedrooms, 1 1/2 bath rms, fin rec. rm. in basement. Close to schools, N.Y. bus & shopping area. In move in cond. Fine neighborhood. Asking \$127,900. For sale by owner. COME SAT/SUN 188 Hillside Ave. Nutley, NJ. Call 667-4160 or 744-0553

## GOLD MARKET ANALYSIS CERTIFICATE

Bearer is entitled to a Market Analysis of his/her residential property by a Century 21 agent. Return this Certificate or call for an appointment.

**Century 21** HOMES R US  
544 Washington Ave.  
Belleville, N.J.  
751-8800

## Put Number 1 to work for you.

**PUBLIC NOTICE**  
This Ordinance is hereby given that the following proposed ordinance was introduced and passed on First Reading at a meeting of the Board of Commissioners of the Township of Belleville held on Tuesday evening, September 25, 1984 and further notice is hereby given that the Second and Final reading of said ordinance will be considered by said Board of Commissioners at a meeting to be held at the Town Hall, 152 Washington Avenue at Belleville Avenue, Tuesday evening, October 9, 1984 at eight o'clock p.m. when all objections to the passing of the same will be heard and considered.

**"AN ORDINANCE ESTABLISHING FEES IN THE REGISTRAR'S OFFICE"**  
BE IT ORDAINED BY THE BOARD OF COMMISSIONERS OF THE TOWNSHIP OF BELLEVILLE, NEW JERSEY:  
SECTION I.  
That the fees shall be \$3.00 for birth, death, and marriage transcripts in the Bureau of Vital Statistics, Registrar's Office; that the above listed heretofore shall be considered legal fees in and for the Township of Belleville.  
SECTION II. This Ordinance shall take effect immediately following final adoption and publication in accordance with law.  
The Belleville Times  
Sept. 27, 1984  
Fee: No. B84-411

**PUBLIC NOTICE**  
This Ordinance is hereby given that the following proposed ordinance was introduced and passed on First Reading at a meeting of the Board of Commissioners of the Township of Belleville held on Tuesday evening, September 25, 1984 and further notice is hereby given that the Second and Final reading of said ordinance will be considered by said Board of Commissioners at a meeting to be held at the Town Hall, 152 Washington Avenue at Belleville Avenue, Tuesday evening, October 9, 1984 at eight o'clock p.m. when all objections to the passing of the same will be heard and considered.

**"AN ORDINANCE AUTHORIZING THE MAYOR AND TOWNSHIP CLERK TO EXECUTE AN AGREEMENT WITH ESSEX COUNTY FOR COOPERATIVE PARTICIPATION IN THE COMMUNITY DEVELOPMENT BLOCK GRANT PROGRAM PURSUANT TO THE INTERLOCAL SERVICES ACT"**  
BE IT ORDAINED BY THE BOARD OF COMMISSIONERS OF THE TOWNSHIP OF BELLEVILLE, NEW JERSEY:  
SECTION 1.  
WHEREAS, certain federal funds are potentially available to Essex County under Title of the Housing and Urban Development Act of 1965 commonly known as Community Development Block Grants; and  
WHEREAS, it is necessary to establish a legal basis for the County and its people to benefit from this program; and  
WHEREAS, an Agreement has been proposed under which the Township of Belleville and the County of Essex in cooperation with other municipalities will establish an Interlocal Services Program pursuant to N.J.S.A. 40B:1-1;  
AND WHEREAS, it is in the best interest of the Township of Belleville to enter into such an agreement;  
NOW THEREFORE, BE IT ORDAINED BY the Governing Body of the Township of Belleville, that the agreement entitled, "Agreement between the County of Essex and certain municipalities located therein for the establishment of a cooperative means of conducting certain community development activities," a copy of which is attached hereto, be executed by the Mayor and Township Clerk in accordance with the provisions of law; and  
BE IT FURTHER ORDAINED that this ordinance shall take effect immediately upon its enactment.  
The Belleville Times  
September 27, 1984  
Fee: No. B84-410

**PUBLIC NOTICE**  
This Ordinance is hereby given that the following proposed ordinance was introduced and passed on First Reading at a meeting of the Board of Commissioners of the Township of Belleville held on Tuesday evening, September 25, 1984 and further notice is hereby given that the Second and Final reading of said ordinance will be considered by said Board of Commissioners at a meeting to be held at the Town Hall, 152 Washington Avenue at Belleville Avenue, Tuesday evening, October 9, 1984 at eight o'clock p.m. when all objections to the passing of the same will be heard and considered.

**"AN ORDINANCE TO AMEND THE REVISED GENERAL ORDINANCES OF THE TOWNSHIP OF BELLEVILLE, NEW JERSEY, RELATIVE TO HANDICAPPED RESERVED PARKING SPACES. ADOPTED 9/15/84. AMENDED 9/25/79, 11/27/79, 9/13/82 AND 8/14/84."**  
BE IT ORDAINED BY THE BOARD OF COMMISSIONERS OF THE TOWNSHIP OF BELLEVILLE, NEW JERSEY:  
SECTION 1. That Section 8, Schedule 15 of the entitled Ordinance is hereby amended by adding the following location to be designated as restricted parking spaces for use by the person who has been issued an identification card or special handicapped insignia plate by the Division of Motor Vehicles:  
NAME OF STREET SIDE LOCATION  
#18 New Street East Beginning of a point 226 ft North of Belleville Avenue to a point 22 feet northerly thereof. Beginning at a point 541 ft North of the Northerly curb line of Newark Avenue to a point 22 feet northerly thereof. Beginning at a point 35 feet East of Passaic Avenue to a point 22 feet easterly thereof.  
#142 Brighton Avenue East Beginning at a point 35 feet East of Passaic Avenue to a point 22 feet easterly thereof.  
Graylock Place South

**SECTION II.** This Ordinance shall take effect immediately following final adoption and publication in accordance with law.  
The Belleville Times  
Sept. 27, 1984  
Fee: No. B84-417

**PUBLIC NOTICE**  
This Ordinance is hereby given that the following proposed ordinance was introduced and passed on First Reading at a meeting of the Board of Commissioners of the Township of Belleville held on Tuesday evening, September 25, 1984 and further notice is hereby given that the Second and Final reading of said ordinance will be considered by said Board of Commissioners at a meeting to be held at the Town Hall, 152 Washington Avenue at Belleville Avenue, Tuesday evening, October 9, 1984 at eight o'clock p.m. when all objections to the passing of the same will be heard and considered.

**"AN ORDINANCE TO AMEND AN ORDINANCE ENTITLED 'AN ORDINANCE PROVIDING FOR THE REGULATION & CONTROL OF VEHICULAR TRAFFIC & PARKING IN CERTAIN STREETS OF THE TOWNSHIP OF BELLEVILLE, COUNTY OF ESSEX, STATE OF N.J., AND PROVIDING FOR THE PENALTIES FOR VIOLATION THEREOF. ADOPTED SEPTEMBER 17, 1984."**  
BE IT ORDAINED BY THE BOARD OF COMMISSIONERS OF THE TOWNSHIP OF BELLEVILLE, NEW JERSEY:  
SECTION I. In accordance with the provisions of Section 8-4 Schedule VI, Chapter 8 Traffic, the following described streets or portions of streets are hereby designated as ONE-WAY:  
NAME OF STREET DIRECTION  
Lawrence Street Westbound from Main Street to Hackett Street  
Hackett Street Eastbound from Lawrence Street to Hackett Street  
Other final adoption and publication in accordance with law and approval of the Commissioners of the Department of Transportation.  
The Belleville Times  
Sept. 27, 1984  
Fee: No. B84-419

**PUBLIC NOTICE**  
The Belleville Board of Education has scheduled a Public Business Meeting on Monday, October 1, 1984, at 8:10 p.m. This meeting will be held at School Number 30, 30 Magnolia Street, Belleville, and will be presided over by a Private Executive Session. Meetings originally scheduled for October 9, 1984, have been canceled.  
Edward J. Appleton  
Acting Board Secretary  
The Belleville Times  
Sept. 27, 1984  
Fee: No. B84-406

**(c) The purpose of the bonds and notes authorized is to finance commitments that may be incurred from the date of adoption of this bond ordinance.**  
Section 4. The following additional matters are hereby determined, declared, recited and stated:  
(a) The said purpose described in Section 3 of this bond ordinance is a current expense and is a property of general improvement, and no part of the cost thereof has been or shall be specially assessed upon property specially benefited therefor.  
(b) The period of usefulness of said purpose within the limitations of said Local Bond Law, according to the reasonable life thereof computed from the date of the said bonds authorized by this bond ordinance, is 15 years.  
(c) The supplemental debt statement required by said Law has been duly made and filed in the office of the Township Clerk and a complete executed duplicate thereof has been filed in the office of the Director of the Division of Local Government Services in the Department of Community Affairs of the State of New Jersey, and such statement shows that the total debt of the Township as defined in said Law is increased by the authorization of the bonds and notes provided for in this bond ordinance by \$85,000, and the said obligations authorized by this bond ordinance will be within of debt limitations prescribed by said Law.  
(d) An aggregate amount not exceeding \$5,000 for interest on said obligations, costs of issuing said obligations and other items of expense listed in and permitted under Section 40A-2.2 of said Law may be included as part of the cost of said improvement and is included in the foregoing statement thereof.  
Section 5. The full faith and credit of the Township are pledged to the payment of the principal of the principal and interest on the said obligations authorized by this bond ordinance. Said obligation shall be direct, unlimited obligation of the Township, and the Township shall be obligated to levy ad valorem taxes upon all the taxable property within the Township for the payment of said obligations and interest thereon without limitation of rate or amount.  
Section 6. The capital budget of the Township is hereby amended to conform with the provisions of this ordinance to the extent that any increase in the amount of the said debt is authorized by this bond ordinance.  
Section 7. This bond ordinance shall take effect twenty (20) days after the first publication thereof after final adoption, as provided by said Local Bond Law.  
**STATEMENT**  
The bond ordinance prescribed herewith has been finally adopted during the 20-day period of limitation with no veto action or proceeding questioning the validity of such ordinance can be commenced, as provided in the local Bond Law has begun to run from the date of the final publication of this statement.  
Mary Lou Hood  
Township Clerk  
The Belleville Times  
Sept. 27, 1984  
Fee: No. B84-408





# Coupon Savings This Week At ShopRite

**Clip And Redeem These Valuable Coupons at ShopRite**

**Extra Value Coupon** 203

SAVE 30

ONE (1) 6 1/2-OZ. CAN SOLID PACK IN OIL OR WATER ECR

**Bumble Bee White Tuna**

With \$7.50 or more purchase (Excl. items prohibited by law.)

**.69** WITH THIS COUPON

Coupon good at any ShopRite market. Limit one per family. Coupon effective Sun., Sept. 23, thru Sat., Sept. 29, 1984.

**Extra Value Coupon** 204

SAVE 50

ONE (1) 15 1/2-OZ. CAN OF ECR

**Bumble Bee Pink Salmon**

With \$7.50 or more purchase (Excl. items prohibited by law.)

**.99** WITH THIS COUPON

Coupon good at any ShopRite market. Limit one per family. Coupon effective Sun., Sept. 23, thru Sat., Sept. 29, 1984.

**Extra Value Coupon** 205

SAVE 20

ONE (1) 2-LTR. BTL. OF REGULAR OR CAFFEINE FREE ECR

**Diet Coke, Coke or Tab**

With \$7.50 or more purchase (Excl. items prohibited by law.)

**.79** WITH THIS COUPON

Coupon good at any ShopRite market. Limit one per family. Coupon effective Sun., Sept. 23, thru Sat., Sept. 29, 1984.

**Extra Value Coupon** 206

SAVE 90

ONE (1) 1 QUART JAR OF ECR

**Hellmann's Mayonnaise**

With \$7.50 or more purchase (Excl. items prohibited by law.)

**.99** WITH THIS COUPON

Coupon good at any ShopRite market. Limit one per family. Coupon effective Sun., Sept. 23, thru Sat., Sept. 29, 1984.

*Happy New Year*

1984 ROSH HASHANAH 5745 ShopRite is pleased to offer a free Kosher Products Directory which lists over 700 ShopRite kosher certified products. Write for your free copy to Consumer Affairs Dept., Wakefern Food Corp., 600 York St., Elizabeth, N.J. 07207

**USDA CHOICE** U.S.D.A. CHOICE BEEF

**Top Round London Broil**

**1.87** lb.

SOLID PACK IN OIL OR WATER

CASE OF 48 47<sup>99</sup>

**Bumble Bee White Tuna**

**.99** 6 1/2-oz. can

REG. OR CAFFEINE FREE

**Diet Coke, Coke or Tab**

**.99** 2-ltr. btl.

## The MEATing® Place

NOT LESS THAN 85%

**Ex. Lean Ground Beef**

**1.87** lb. ANY SIZE PACKAGE

**USDA CHOICE** WHOLE UNTRIMMED FRESH BONELESS

**Beef Brisket**

**1.27** 7-LB. AVG.

BONELESS BOTTOM OR

**Boneless Top Round Roast**

**1.87** lb.

THIN CUT

**Fresh Beef Brisket**

**1.97** lb.

BONELESS CHUCK

**Beef For Stew**

**1.97** lb.

**Empire Kosher Products**

FROZEN, 12-14 LBS., EMPIRE KOSHER

**Young Turkeys**

**.89** lb.

FOR A QUICK SANDWICH, BEEF ROUND

**Cubed Steak**

**2.37** lb.

FROZEN, WHOLE WITH THIGHS, EMPIRE KOSHER

**Chicken Legs**

**1.19** lb.

DELICIOUS, FROM SHORT RIBS

**Beef Flanken**

**1.87** lb.

FROZEN, 4-LB. AVG., EMPIRE KOSHER

**Roasting Chickens**

**1.39** lb.

BONELESS BEEF

**Rump Roast**

**2.07** lb.

FROZEN, EMPIRE KOSHER

**Chicken Livers**

**.99** 8-oz. pkg.

BEEF WITH BOTTOM ATTACHED

**Eye Round Roast**

**2.17** lb.

**The Produce Place**

CALIFORNIA

**Fresh Broccoli**

**.79** large bunch

FOR A TASTY TREAT

**Italian Prune Plums**

**3.10** lbs.

FRESH CRISP

**Green Peppers**

**.39** 10-oz. btl.

U.S. #1 GRADE WESTERN

**Bartlett Pears**

**.39** 1-lb. bag

U.S. #1 GRADE, CRISP

**Fresh Carrots**

**.59** 2-lb. bag

U.S. FANCY GRADE

**McIntosh Apples**

**.59** 5-lb. bag

THE NATURAL SNACK

**Red Grapes**

**.69** 1-lb. bag

SWEET CALIFORNIA, 6-SIZE

**Large Honeydews**

**1.19** each

**Health & Beauty Aids**

NORMAL, OILY OR DRY

**Ivory Shampoo or Conditioner**

**1.69** 15-oz. btl.

GRADE A SWEET & TENDER

**Fresh Small Scallops\***

**2.49** lb.

EXTRA MOISTURIZING OR EX. PROTECTION

**Soft Sene Lotion**

**1.89** 10-oz. btl.

GRADE A WEST COAST, FRESH

**Turbot Fillet\***

**2.19** lb.

WHEAT AND HONEY SHAMPOO OR BALM & MOISTURIZING

**Suave Conditioner**

**1.79** 28-oz. btl.

FROZEN & THAWED, 31.35 PER LB.

**Large Shrimp**

**6.99** lb.

**General Merchandise**

FROM WHALES TO NAILS AND OUR WONDERFUL EARTH VOL. 8&9

**Fun-To-Learn**

**2.59** each

**The Bakery Place**

NO PRES. ADDED, ShopRite HEARTH BAKED ASS'D

**Jewish Rye Breads**

**.59** 16-oz. loaf

AMS 32-GAL. WITH WHEELS

**Trash Barrel**

**9.99** each

ASSORTED VARIETIES

**ShopRite Pita**

**.59** 12-oz. pkg.

NEW MOTOR OIL

**Shell Fire & Ice**

**.79** qt.

FILLED

**Combos Snacks**

**1.99** 16-oz. bag

## The Grocery Place

BUMBLE BEE

CASE OF 24 35<sup>79</sup>

**Pink Salmon**

**1.49** 15 1/2-oz. can

CHUNK LIGHT IN OIL OR WATER

**Bumble Bee Tuna**

**.69** 11-oz. can

ALL VARS., DECAFFEINATED

**Sanka Ground Coffee**

**2.99** 13-oz. can

ELBOW MAC. OR REG. OR THIN

**Prince Spaghetti**

**3.10** 1-lb. boxes

ALL GRINDS

**Maxwell House Coffee**

**2.19** 1-lb. can

PRICE BREAK ALL VAR.

**Capri Sun Drinks**

**1.99** 10-pk. 67.5-oz. T.W. pkg.

WHY PAY MORE?

**Tetley Tea Bags**

**1.89** 100-ct. box

ALL VARIETIES

**Pasta D'Italia**

**3.10** 1-lb. bags

ELASTIC LEG, LARGE (32-CT) OR MEDIUM

**ShopRite Diapers**

**5.99** 48-ct. bag

SHOPRITE RED LABEL

**Tomato Puree**

**.59** 1-lb. 12-oz. can

KOSHER

**Kedem Grape Juice**

**1.19** 1-lb. 12-oz. btl.

CONTADINA

**Tomato Sauce**

**1.00** 6-oz. cans

WELCH'S

**Tomato Juice**

**.89** 1-qt. jar

DISH DETERGENT

**Sun Light Liquid**

**1.49** 1-qt. btl.

PRICE BREAK ShopRite 20-OT.

**Iced Tea Mix**

**2.99** 4-lb. can

PLUS DEP. WHERE REQUIRED

**Vintage Seltzer**

**.99** 4 1-pk. 12-oz. btl.

LARGE KITCHEN (15-CT) OR TRASH

**Glad Bags**

**.99** 10-ct. box

ASS. VARIETIES, PAPER

**Marcal Towels**

**.49** 100-ct. roll

SLICED OR WHOLE, REG. OR NO SALT

**ShopRite Potatoes**

**1.00** 3-lb. cans

LARGE (32-CT), SMALL (66-CT) OR MEDIUM

**Luvs Diapers**

**7.99** 48-ct. box

**The Dairy Place**

SALT OR SWEET

**Land O' Lakes Butter**

**1.99** 1-lb. pkg.

**The Deli Place**

REG. THICK OR MAPLE

**ShopRite Bacon**

**1.29** 1-lb. pkg.

ShopRite USDA GRADE 'A'

**Medium Eggs**

**.69** 1-do. cart.

ShopRite MILD OR

**Tangy Pork Roll**

**2.49** 1 1/2-lb. pks.

\*ORANGE YOU SMART\*, 100% PURE ShopRite

**Orange Juice**

**1.49** 12-gal. cart.

REGULAR OR BEEF

**Swift Sizzlean**

**1.59** 12-oz. pkg.

**The Appy Place**

STORE SLICED

**Cooked Virginia Ham**

**1.39** 1-lb.

\*ORANGE YOU SMART\* 100% PURE

**ShopRite Orange Juice**

**1.29** 16-oz. can

AUSTRIAN IMPORTED

**Swiss Cheese**

**1.69** 1/2-lb.

BEEF, TURKEY OR CHICKEN

**Swanson Pot Pies**

**2.89** 8-oz. pks.

STORE SLICED, COOKED

**Corned Beef**

**2.99** 1-lb.

ASSORTED VARIETIES ENTREES

**Freezer Queen**

**1.59** 2-lb. pkg.

STORE SLICED

**Beef Bologna**

**.89** 1/2-lb.

ANDREA "LARGE ROUND"

**Cheese Ravioli**

**1.19** 13-oz. pkg.

**See The High Quality Our Low Prices Can Buy!**

In order to assure a sufficient supply of sales items for all our customers, we must reserve the right to limit the purchase to units of 4 of any sales items, except where otherwise noted. Not responsible for typographical errors. Prices effective Sun., Sept. 23, thru Sat., Sept. 29, 1984. None sold to other retailers or wholesalers. Artwork does not necessarily represent item on sale. It is for display purposes only. Copyright WAKEFERN FOOD CORPORATION 1984.